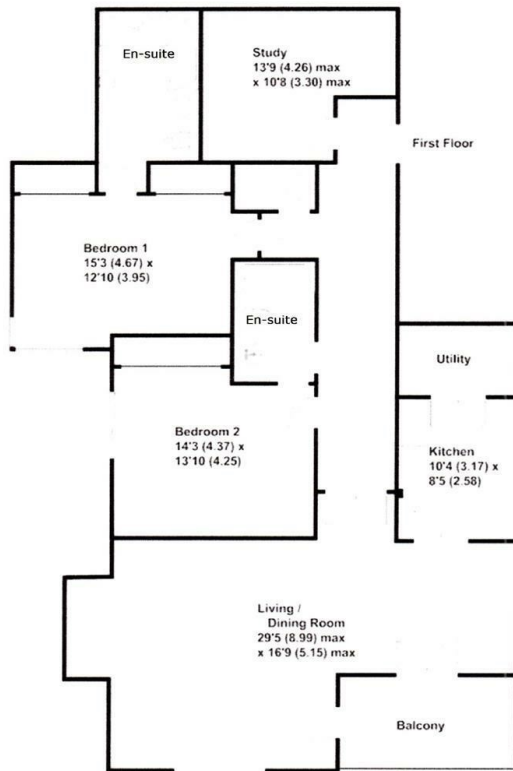




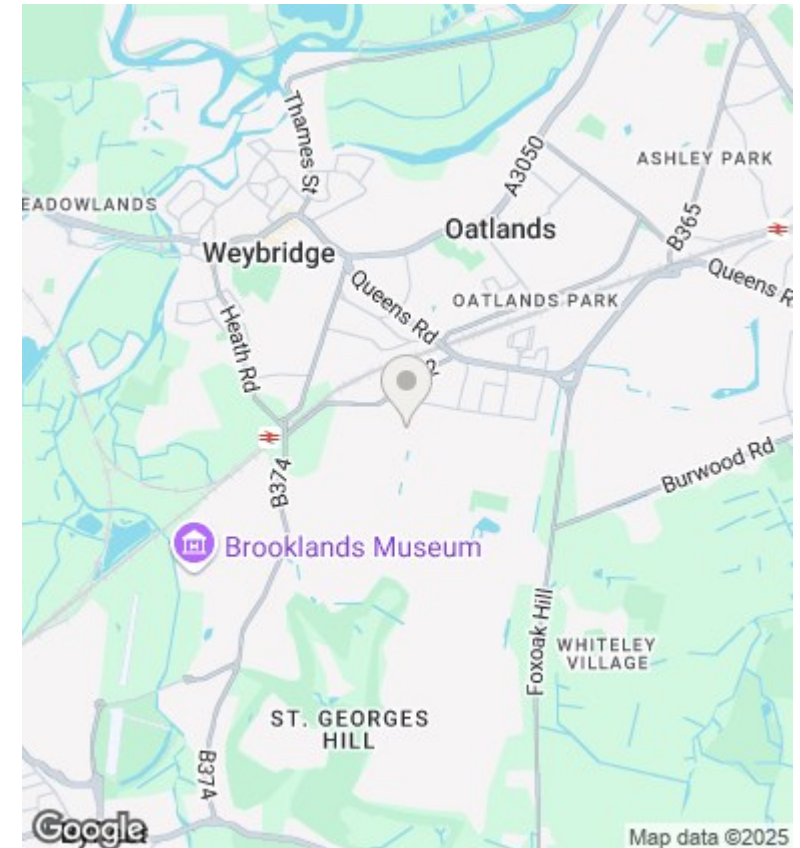
St Georges Court, 4 Cavendish Road, Weybridge, Surrey, KT13 0JH

£3,400 PCM

- Automated Entrance Gates
- Adjacent to St Georges Hill
- First Floor with Lift
- Concierge
- Gated Development
- Study
- Balcony
- Two parking spaces
- AVAILABLE MID MAY



Approximate Gross Internal Floor Area - 1452 sq/ft - 135 sq/mtr



Directions

Weybridge Head north-east on Station Approach At the roundabout, take the 4th exit onto Brooklands Rd/B374 Turn left onto St George's Ave/B372 Slight right onto Egerton Rd Turn right onto Cavendish Rd Turn right

Viewings

Viewings by arrangement only. Call 01932 483 284 to make an appointment.

Council Tax Band

G

EPC Rating:

Energy Efficiency Rating		
	Current	Potential
Very energy efficient - lower running costs		
(92 plus) A		
(81-91) B		
(69-80) C		
(55-68) D		
(39-54) E		
(21-38) F		
(1-20) G		
Not energy efficient - higher running costs		
England & Wales	EU Directive 2002/91/EC	