

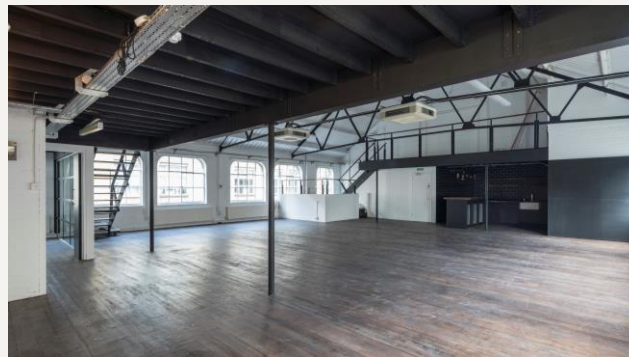
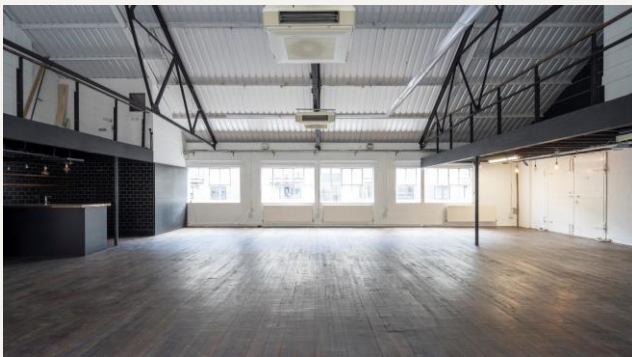


Susskind.

16-24 Underwood Street, N1

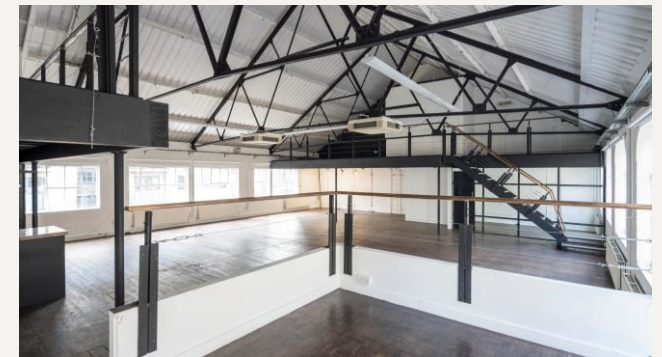
True raw warehouse space spread across multiple units, located within a 5 minute walk to Old Street station.

Underwood Street is a charming, quiet street set back from the busy City Road which connects Angel and The City. Along City Road and Old Street there are ample amenities such as cafes, bars, restaurants and pubs.



16-24 Underwood Street offers tenants seeking 'creative' style offices at cost-effective rates. Each available unit presents its own distinct identity with variations to floor and wall finishes.

Various available units within the building come partially fitted with meeting rooms and demised kitchens.



16-24 Underwood Street, N1

Summary

Warehouse style offices closely situated to Old Street roundabout

Features

- Generous floor to ceiling height
- Character warehouse offices
- Original wood flooring
- Partial fit-out in situ
- WC facilities
- Cast iron columns
- Exposed steel beams
- Solid wood floors
- Excellent natural light
- Warehouse style space
- Strip lighting
- Demised kitchen

Transport

- Old Street
- Angel

Lease

New Full Repairing & Insuring Lease for a term by arrangement direct from the Landlord.

EPC

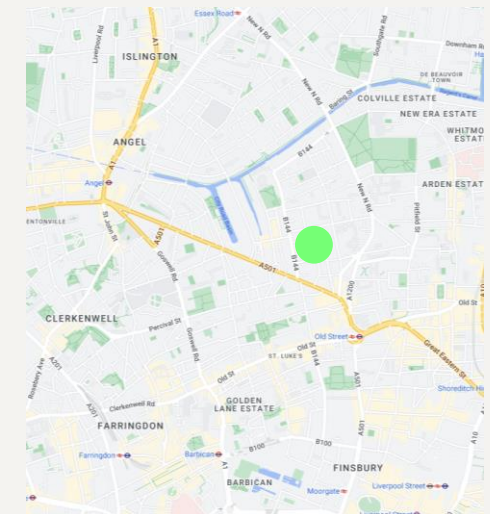
An EPC has been commissioned and will be available on request.

Availability

Floor	Size Sq Ft	Rent Sq Ft	Service Charge	Business Rates*	£/PCM	Status
Unit 1-3 - Lower Ground	1,368	£25.00	£6.00	£6.20	£4,240.80	Available
Unit 2-7 - Ground & Lower Ground	3,008	£35.00	£6.00	£8.51	£12,410.51	Available
Unit 8 - Ground	1,768	£39.50	£6.00	£13.64	£8,713.30	Available
Unit 20 - Second & Third	2,838	£39.50	£6.00	£12.00	£13,598.75	Available
Unit 21 - Second	2,367	£39.50	£6.00	£10.75	£11,095.31	Available
Total	11,349	-	£6.00	-	-	

*Interested parties should make enquiries with the local authority.

Map



16-24 Underwood Street, N1

Viewing via sole agents

For further information and inspections please contact sole agents:

Adam Noble
07980 991 217
Adam@susskind.london

Roni Rosenberg
07702 643 317
Roni@susskind.london

Subject to contract

Misrepresentation Act - These details and all the description and measurements herein do not form part of any contract and whilst every effort has been made to ensure accuracy, this cannot be guaranteed.

Colonial Buildings
59-61 Hatton Garden
London, EC1N 8LS

T +44 (0) 207 831 8311
E hello@susskind.london
W susskind.london

Susskind.