

38 Corbieshot, The Jewel, Edinburgh, EH15 3RY



Description

Located at the end of a cul-de-sac, this superb two-bedroom terrace property is a charming residence that forms part of a mature development enjoying an extremely convenient location, close to an excellent range of amenities and transport links. The home is beautifully presented throughout, offering bright and airy accommodation. It includes a quality kitchen and bathroom, as well as an enclosed sunny rear garden and a parking space. Altogether, the property will certainly be popular with commuting professionals, couples, first-time buyers, and young families alike.

Features

- Superbly presented terraced home finished to a high spec
- Nestled at the end of a quiet cul-de-sac close to an excellent range of amenities
- South-facing living room
- Quality kitchen with access to rear garden
- Two double bedrooms
- Contemporary three-piece bathroom with shower
- Gas central heating and double glazing
- Enclosed, easy-to-maintain rear garden
- Designated parking space

Extras

The blinds, oven, hob and cooker hood are included.

EPC Rating: C

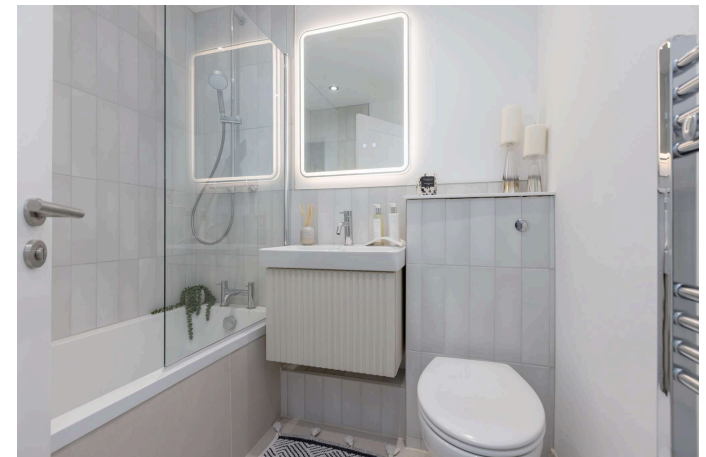
Price and Viewing

For price and viewing information or further details on this property please contact us on 0131 557 3188.

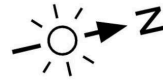


Location

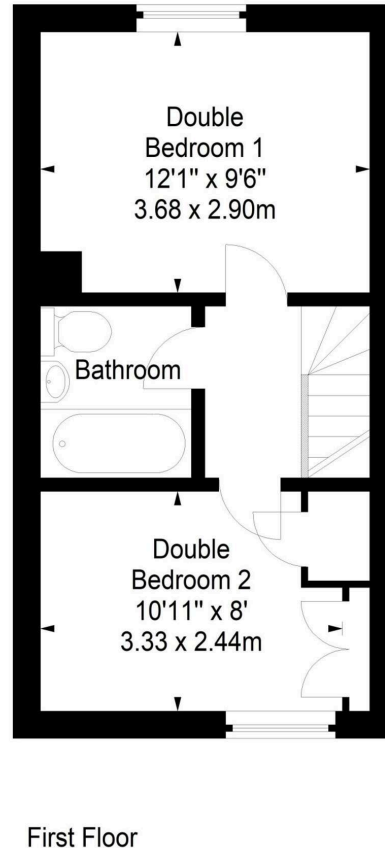
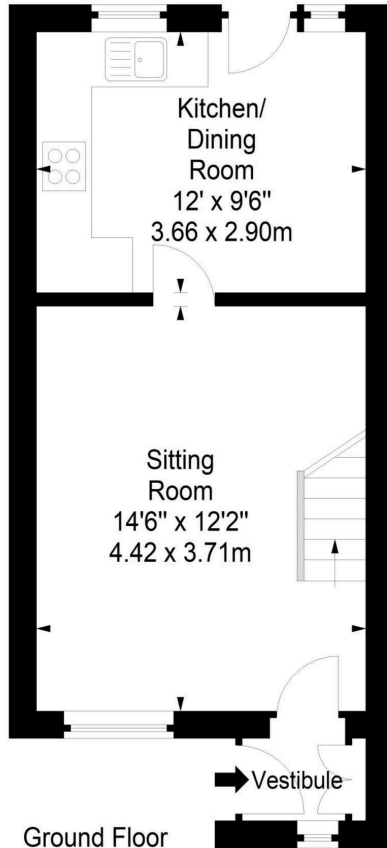
Positioned east of Edinburgh city centre and just south of Portobello, The Jewel is a popular district amongst commuting professionals and families alike. This relatively small area is comprised of an established residential development and a large supermarket. Conveniently, it also borders Fort Kinnaird Retail Park, which is home to an extensive range of high-street shops, eateries, and a multiplex cinema. There are nearby convenience stores as well, and a cluster of public parks within easy reach. Furthermore, some of Edinburgh's best loved green spaces are close by, including Duddingston Loch, Holyrood Park, and Arthur's Seat - perfect for day's out in the sun. Portobello Beach is also a short drive or bus journey away, offering its vast golden sands and seafront promenade for leisurely strolls. Further amenities, trendy bars and restaurants can be enjoyed in Portobello as well. Being less than 4 miles from the heart of Edinburgh city centre, it is easy to enjoy the capital's world-class shopping, leisure, and cultural facilities too. Furthermore, the Jewel is served by regular bus links and it is close to the A1 for swift travel in and around the city centre. In addition, Brunstane train station is nearby for travel further afield. Finally, the area offers well-regarded schooling which caters for all levels.



Corbieshot, EH15 3RY



Approx. Gross Internal Area
613 Sq Ft - 56.95 Sq M
For identification only. Not to scale.
© SquareFoot 2025



1 Inverleith Terrace
Edinburgh
EH3 5NS
T: 0131 557 3188
F: 0131 557 6561
www.connormalcolm.com

While these particulars are believed to be correct, they do not form part of any agreement or contract. We would draw your attention to the following points: All measurements have been taken with a sonic measurer and are, therefore, approximate. All measurements are taken from the widest points. None of the appliances have been tested by this office and we give no warranty as to their condition. Where the subjects have been altered or extended in any way by the sellers or their predecessors, we are not always in a position to verify, prior to preparation of the schedule of particulars, that all necessary Local Authority consents are available. Confirmation of Council tax bands can be obtained from the City of Edinburgh Council. Interested parties are advised to note interest through a solicitor, so that they are notified of any closing date, and on whose behalf their solicitor may request a copy of the Seller's Home Report.

espc