

1 Grierson Crescent, Trinity, Edinburgh, EH5 2AT





## 1 Grierson Crescent | Trinity | Edinburgh | EH5 2AT

### Description

A rare opportunity has arisen to acquire an impressive extended end terraced villa, of immense appeal occupying a larger corner plot setting and enjoying a peaceful position within a sought after location. This attractive family home offers spacious, versatile and well-planned accommodation over 2 levels and comes with the added attraction of a large enclosed sunny rear garden providing a good degree of privacy and seclusion.

- Hallway
- Superb, airy dual-facing living room with high ceiling featuring patio doors opening onto the rear garden and a log burner
- Bay windowed lounge/family room
- Well equipped kitchen/dining room leading to a sun porch which in turn gives access to the rear garden
- Contemporary shower room on ground floor level
- Master bedroom with en-suite bathroom comprising of a classic white three piece suite with shower attachment
- Three further bedrooms
- Principal shower room with walk-in shower enclosure
- Attic storage
- Gas central heating and double glazing
- Mature enclosed tranquil garden to the rear offering an ideal space for summer relaxation and outside entertaining.
- Driveway

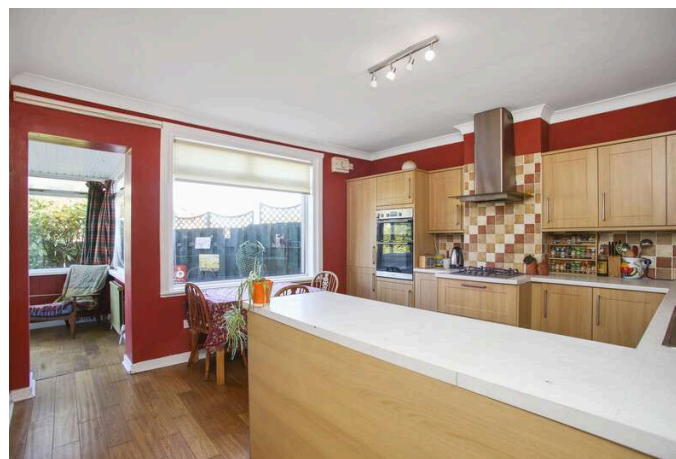
### Extras

The double oven, hob, cooker hood, washing machine, dishwasher, fridge/freezer and two garden sheds are included.

**EPC Rating: D**

### Price and Viewing

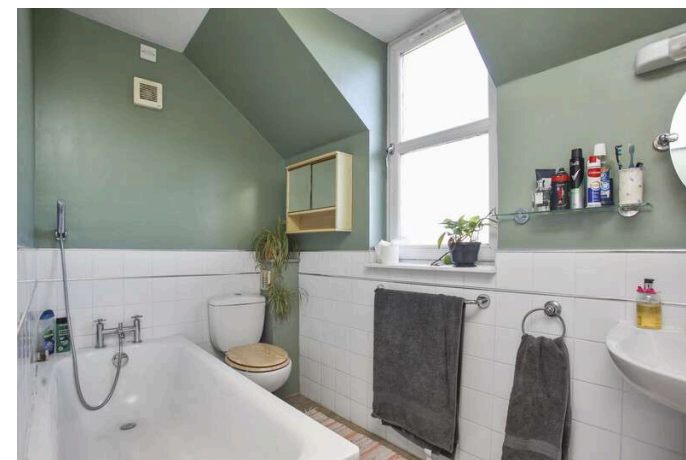
For price and viewing information or further details on this property please contact us on 0131 557 3188.

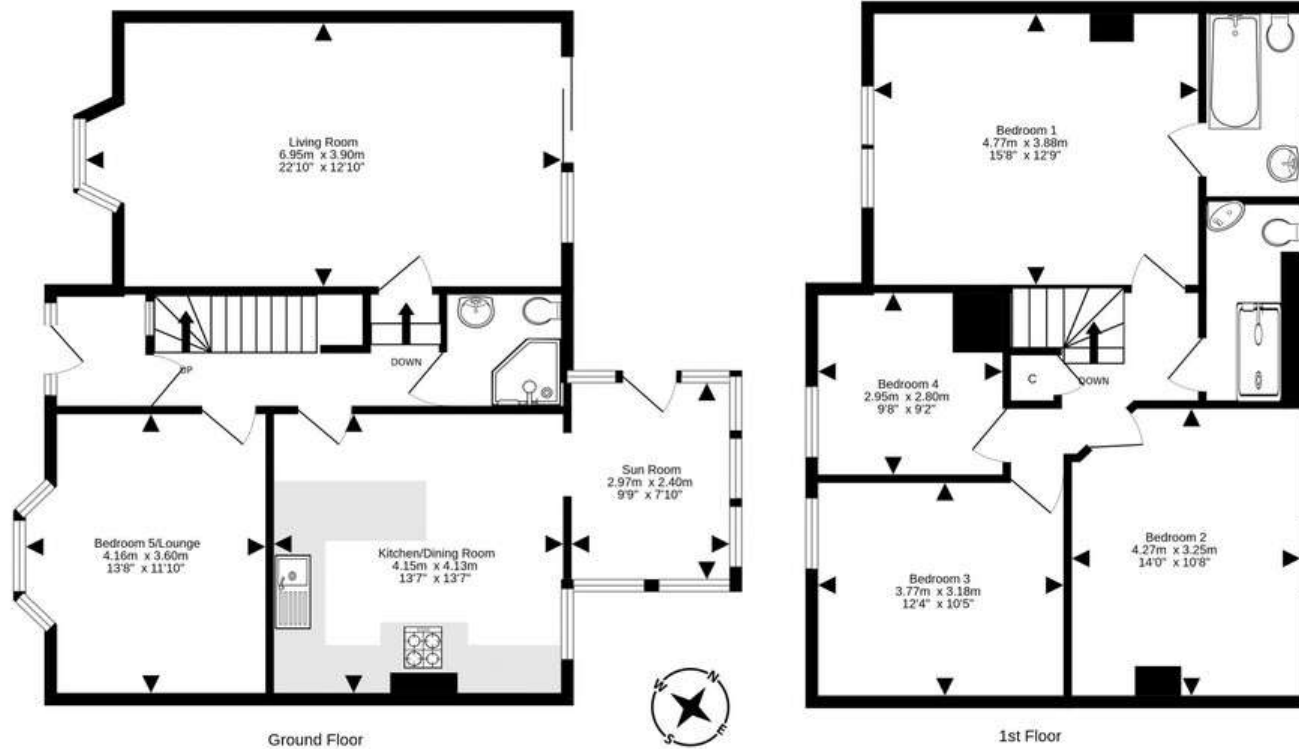




## Location

Situated to the north of the city, the leafy and exclusive suburb of Trinity is a highly desirable residential area, characterised by a combination of period, traditional and modern architecture. Situated less than three miles from the centre of Edinburgh next to the Firth of Forth, the immediate area offers a broad selection of local amenities. These are supplemented by extensive shopping facilities at nearby Craigleith Retail Park, which hosts a range of high street retailers and supermarkets. Ocean Terminal in Leith also caters for shoppers, as well as cinema-goers and gym-goers. Additional amenities can be found in Trinity's neighbouring districts, which include the historic Newhaven harbour and the fashionable Shore, complete with Michelin star establishments and stylish bars. Trinity, with its extensive network of cycle paths and walkways, is ideal for those who enjoy the outdoors. Delightful green areas include the leafy Victoria Park with the Royal Botanic Gardens nearby. Meanwhile, the Firth of Forth waterfront and Water of Leith Walkway cater for those who prefer a river and shore backdrop. Education is offered at well-regarded state schools, while the capital's independent schools are within easy reach. Regular bus services allow quick travel throughout the city as well as the newly opened tram link offering swift access to the airport. The Queensferry Crossing, Edinburgh City Bypass and M8/ M9 motorway network are easily accessible for those going further afield





For details of the total internal floor area, please refer to the property's Home Report. This plan is for illustrative purposes only and should be used as such by a prospective purchaser. Made with Metropix ©2024



**Connor  
Malcolm**

1 Inverleith Terrace  
Edinburgh  
EH3 5NS  
T: 0131 557 3188  
F: 0131 557 6561  
[www.connormalcolm.com](http://www.connormalcolm.com)

While these particulars are believed to be correct, they do not form part of any agreement or contract. We would draw your attention to the following points: All measurements have been taken with a sonic measurer and are, therefore, approximate. All measurements are taken from the widest points. None of the appliances have been tested by this office and we give no warranty as to their condition. Where the subjects have been altered or extended in any way by the sellers or their predecessors, we are not always in a position to verify, prior to preparation of the schedule of particulars, that all necessary Local Authority consents are available. Confirmation of Council tax bands can be obtained from the City of Edinburgh Council. Interested parties are advised to note interest through a solicitor, so that they are notified of any closing date, and on whose behalf their solicitor may request a copy of the Seller's Home Report.

**espc**