

MADE



1 Cloudesley Road
, St. Leonards-On-Sea, TN37 6JN
Offers in excess of £900,000

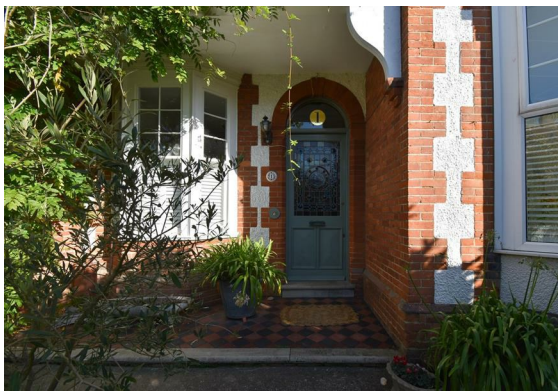


1 Cloudesley Road

, St. Leonards-On-Sea, TN37 6JN

Set in an idyllic St. Leonards location, just a short stroll from the seafront and easy reach of independent shops, popular restaurants, and Warrior Square mainline station with direct links to London this **ELEGANT AND RARELY AVAILABLE EDWARDIAN RESIDENCE** spans three spacious storeys, offering a **PERFECT BLEND OF PERIOD CHARM AND MODERN LUXURY**.

Sympathetically refurbished to an exceptional standard it retains a **WEALTH OF ORIGINAL FEATURES** including stained glass windows, exposed floorboards, reclaimed cast iron radiators throughout and **STRIKING MARBLE FIREPLACES**. You enter into a vestibule with a beautiful stained glass door opening to a **WIDE ENTRANCE HALL** where you're immediately greeted by a sense of grandeur and warmth. There are **THREE GENEROUS RECEPTION ROOMS** with original ceiling detailing, cornicing and ceiling roses, all boasting bay windows and original marble fireplaces, offering flexible living space ideal for both entertaining and everyday family life. At the heart of the home is a remarkable 26'7 x 13'4 **DUAL ASPECT EAT-IN KITCHEN**, complete with a wood-burning stove and ample room for a large dining table. The kitchen features bespoke wooden units complimented with Carrera Marble worktops and French doors open directly onto the rear garden, creating a seamless indoor-outdoor connection. There is also a handy downstairs cloakroom.

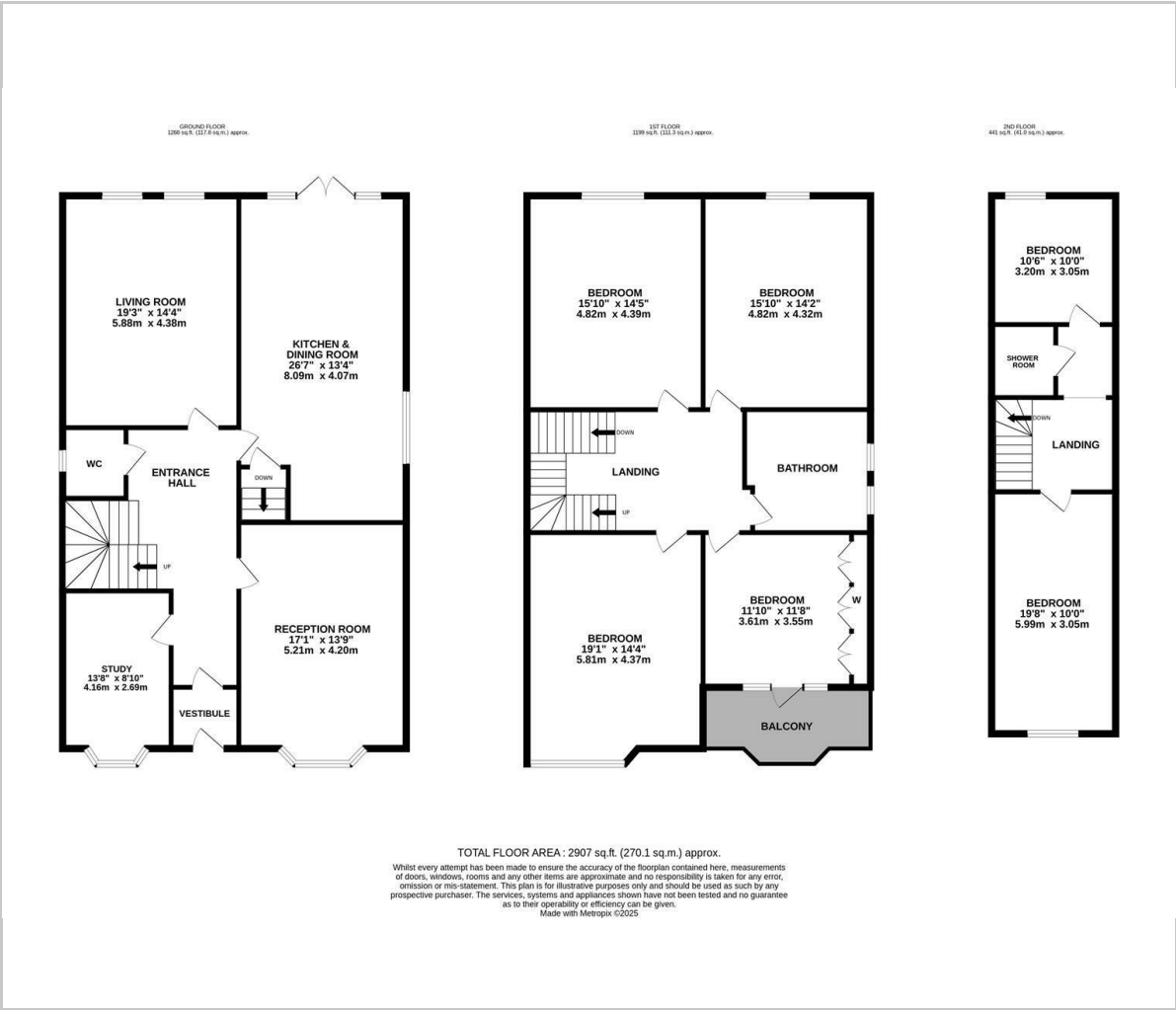




Upstairs, the first floor features four spacious double bedrooms and a **NEWLY INSTALLED FAMILY BATHROOM** with a stylish freestanding bath and separate walk-in shower. One of the front-facing bedrooms opens onto a **PRIVATE BALCONY** with space for seating and **ELEVATED VIEWS STRETCHING TOWARDS THE SEA**. The principal bedroom is a true retreat, complete with a feature fireplace and a freestanding roll-top bath for added indulgence. The top floor features a galleried landing with far reaching sea views, it houses two further double bedrooms and an additional shower room, making it ideal for guests, teenagers, or those who work from home.



Floor Plan



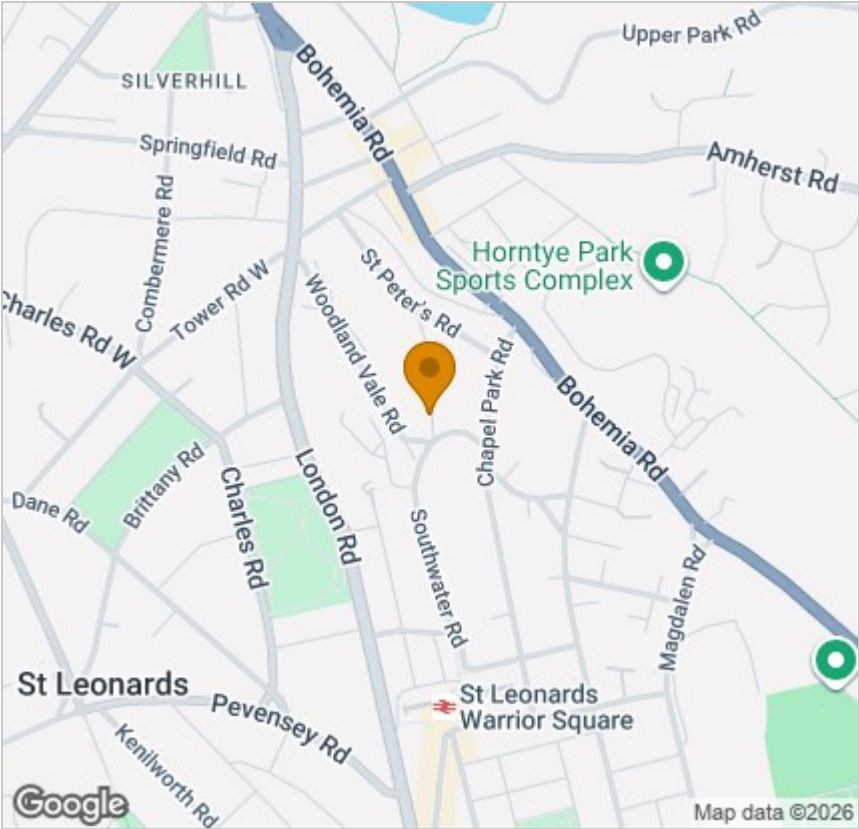
Viewing

Please contact our Hastings Office on 01424 444700 if you wish to arrange a viewing appointment for this property or require further information.

These particulars, whilst believed to be accurate are set out as a general outline only for guidance and do not constitute any part of an offer or contract. Intending purchasers should not rely on them as statements of representation of fact, but must satisfy themselves by inspection or otherwise as to their accuracy. No person in this firms employment has the authority to make or give any representation or warranty in respect of the property.

24 Havelock Road, Hastings, East Sussex, TN34 1BP
Tel: 01424 444700 Email: hello@madehastings.co.uk <https://www.madehastings.co.uk>

Area Map



Energy Efficiency Graph

