



Tackleway, Hastings TN34 3DA

Offers in excess of £350,000



2



1



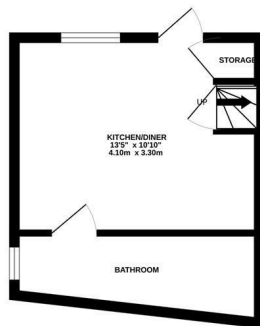
1



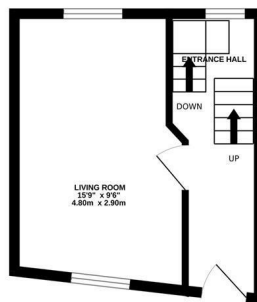
E

Simply stunning two bedroom END OF TERRACE HOUSE spanning THREE STOREYS, positioned in an IDYLIC SETTING in the heart of Hastings Old Town, on the cusp of the East Hill and just moments from the beach. The accommodation here offers a WEALTH OF ORIGINAL FEATURES including large sash windows and original floorboards flowing throughout. The lower ground floor houses the EAT IN KITCHEN which provides ample storage space and access out to the rear courtyard with handy side access. There is also a family bathroom on this floor with a bath and shower over. The BRIGHT LIVING ROOM is on the ground floor and enjoys STUNNING VIEWS ACROSS HASTINGS OLD TOWN, while the upper floor houses two bedrooms with the main bedroom enjoying a front aspect. Set in an ICONIC LOCATION and being sold with NO ONWARD CHAIN, this fantastic property would make the PERFECT SEASIDE RETREAT and is not to be missed.

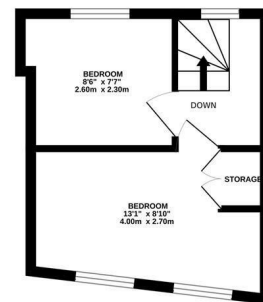
BASEMENT
207 sq.ft. (19.2 sq.m.) approx.



GROUND FLOOR
207 sq.ft. (19.3 sq.m.) approx.



1ST FLOOR
200 sq.ft. (18.6 sq.m.) approx.



TOTAL FLOOR AREA : 615 sq.ft. (57.1 sq.m.) approx.

Whilst every attempt has been made to ensure the accuracy of the floorplan contained here, measurements of doors, windows, rooms and any other items are approximate and no responsibility is taken for any error, omission or mis-statement. This plan is for illustrative purposes only and should be used as such by any prospective purchaser. The services, systems and appliances shown have not been tested and no guarantee as to their operability or efficiency can be given.
Made with Metropix ©2023

