

St. Johns Road, St. Leonards-On-Sea TN37 6HP

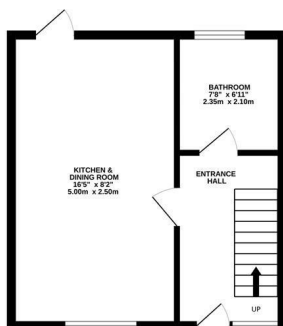
Offers in excess of £325,000



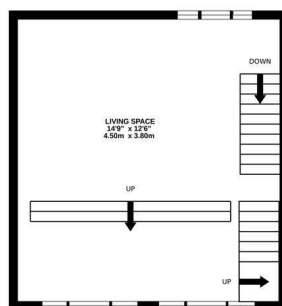
A three storey townhouse with picturesque sea views forming a portion of this Grade II listed FORMER SCHOOLHOUSE and attached School Mistresses house. It occupies an idyllic position, nestled in a leafy St. Leonards setting, just a short stroll from the seafront. It's equidistant from Hastings Town centre and St. Leonards-On-Sea, easy walking distance to a variety of independent stores, coffee shops, restaurants and two mainline railway stations benefitting from connections to London.

Originally designed by renowned architect SS Teulon it retains an abundance of original features throughout including high ceilings and exposed brickwork. You enter in to a welcoming entrance hall on the ground floor where there is generous kitchen and dining space fitted with industrial stainless steel units complimented with open shelving and a large arched window which frames a sunny Southerly front aspect, creating a charming dining nook. There is access out to the private garden

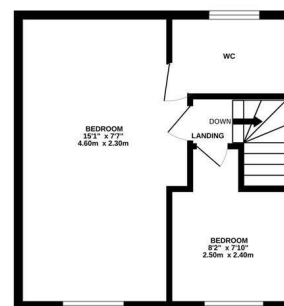
GROUND FLOOR
337 sq.ft. (31.3 sq.m.) approx.



1ST FLOOR
337 sq.ft. (31.3 sq.m.) approx.



2ND FLOOR
337 sq.ft. (31.3 sq.m.) approx.



TOTAL FLOOR AREA : 1010 sq.ft. (93.9 sq.m.) approx.

Whilst every attempt has been made to ensure the accuracy of the floorplan contained here, measurements of doors, windows, rooms and any other items are approximate and no responsibility is taken for any error, omission or mis-statement. This plan is for illustrative purposes only and should be used as such by any prospective purchaser. The services, systems and appliances shown have not been tested and no guarantee as to their operability or efficiency can be given.

Made with Metropix ©2025

