



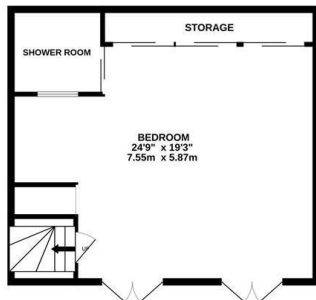
Croft Hall, Hastings TN34 3BF

Offers in excess of £350,000

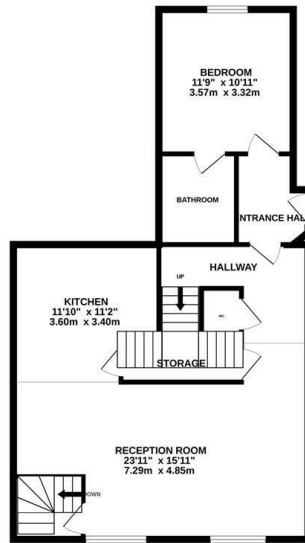


A contemporary THREE BEDROOM, THREE BATHROOM APARTMENT forming a portion of this former Victorian school where the juxtaposition of new and old creates a unique home brimming with character. This gated development is located just a SHORT STROLL FROM THE BEACH AND HASTINGS OLD TOWN where there are a range of independent eateries and artisan stores. Spanning three storeys the accommodation here is presented to an EXCEPTIONALLY HIGH STANDARD throughout, arranged as a bright OPEN PLAN LIVING SPACE which measures an impressive 23'11 x 15'11 with TWO ORIGINAL FEATURE WINDOWS, double height ceilings and parquet herringbone flooring flowing throughout. The STYLISH FITTED KITCHEN provides ample storage and worktop space along with plenty of room for a full dining table, creating the ideal sociable setting. There is one double bedroom on this floor which also benefits from an EN-SUITE BATHROOM while the MEZZANINE LEVEL provides a family bathroom and space for a second bedroom or home office which leads through to the DRESSING ROOM where there are BUILT-IN WARDROBES. There is an ADDITIONAL

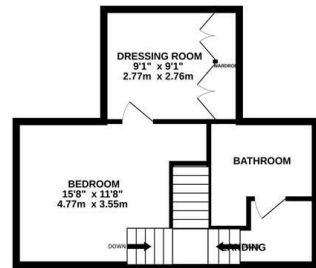
LOWER GROUND FLOOR
547 sq.ft. (50.9 sq.m.) approx.



GROUND FLOOR
785 sq.ft. (72.9 sq.m.) approx.



MEZZANINE LEVEL
383 sq.ft. (35.5 sq.m.) approx.



TOTAL FLOOR AREA: 1715 sq.ft. (159.3 sq.m.) approx.

Whilst every attempt has been made to ensure the accuracy of the floorplan contained here, measurements of doors, windows, rooms and any other items are approximate and no responsibility is taken for any error, omission or mis-statement. This plan is for illustrative purposes only and should be used as such by any prospective purchaser. The services, systems and appliances shown have not been tested and no guarantee as to their operability or efficiency can be given.
Made with Metropix ©2025

