

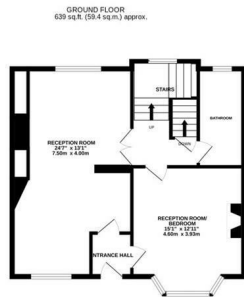
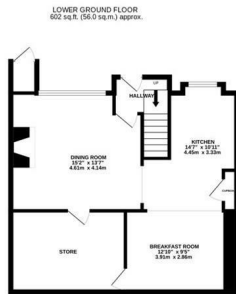


## High Street, Hastings TN34 3EY

Offers in excess of £775,000



An impressive six bedroom DOUBLE FRONTED TERRACED HOUSE situated in an idyllic setting in the HEART OF HASTINGS HISTORIC OLD TOWN. Positioned just metres from the seafront, independent shops, galleries, restaurants and traditional pubs this fantastic property is perfectly placed for life at the coast. Hastings Town centre is also within easy walking distance and benefits from a mainline railway station offering connections to London. Spanning FOUR SPACIOUS STOREYS, this late 17th Century GRADE II LISTED home, once owned by prominent local surgeon and property developer Samuel Satterley, offers a WEALTH OF ORIGINAL FEATURES including wooden beams, bay windows and ornate fireplaces throughout. The ground floor is arranged as a large living room enjoying a DUAL ASPECT and there is a second reception room on this floor which could also be used as a bedroom along with a bathroom while the OPEN PLAN KITCHEN AND DINING ROOM spans the lower ground floor featuring FLAGSTONE FLOORING, access to the garden and a large STORE ROOM. The six bedrooms can be found on the two upper floors, all of which are double



**TOTAL FLOOR AREA: 2394 sq.ft. (222.4 sq.m.) approx.**

Whilst every attempt has been made to ensure the accuracy of the floorplan contained here, measurements of doors, windows, rooms and any other items are approximate and no responsibility is taken for any error, omission or mis-statement. This plan is for illustrative purposes only and should be used as such by any prospective purchaser. The services, systems and appliances shown have not been tested and no guarantee as to their operability or efficiency can be given.  
Made with Metropix ©2025

