



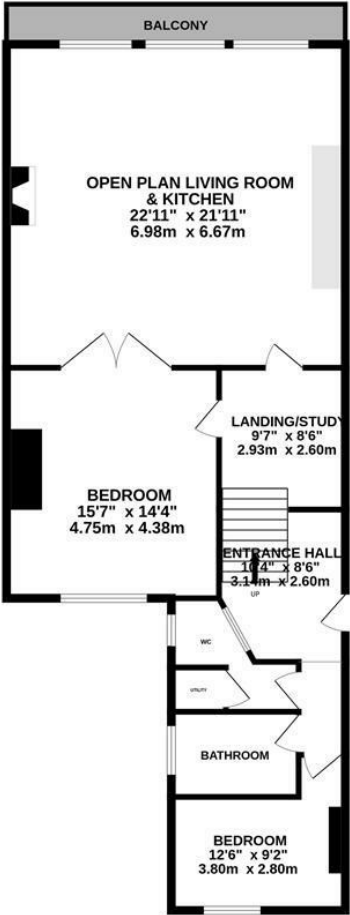
Marina, St. Leonards-On-Sea TN38 0BP

Offers in excess of £550,000



A simply stunning TWO BEDROOM APARTMENT with UNBEATABLE SEA VIEWS situated in a prime seafront location. The apartment enjoys an IDYLIC POSITION sitting adjacent to the beach. It's also just a short stroll from the hub of St. Leonards On Sea where you'll find local independent shops, award winning eateries and galleries, along with a mainline railway station with connections through to London. Spanning the much coveted first floor of this attractive, PERIOD RESIDENCE, the accommodation here is PRESENTED TO A BEAUTIFUL STANDARD THROUGHOUT enjoying a WEALTH OF ORIGINAL FEATURES, including sash windows, 4m high ceilings, immaculate ornate carved fireplace and beautifully detailed original cornicing throughout. The impressive living space enjoys a WOOD BURNING STOVE and relishes THREE FLOOR TO CEILING SASH WINDOWS with original Victorian wooden shutters, leading out to the WROUGHT IRON BALCONY, framing BREATHTAKING SEA VIEWS along the coast and towards Beachy Head. Measuring 22'11 x 21'11, this grand space is open to the CONTEMPORARY FITTED KITCHEN which houses integrated

FIRST FLOOR
1085 sq.ft. (100.8 sq.m.) approx.



TOTAL FLOOR AREA: 1085 sq.ft. (100.8 sq.m.) approx.

Whilst every attempt has been made to ensure the accuracy of the floorplan contained here, measurements of doors, windows, rooms and any other items are approximate and no responsibility is taken for any error, omission or mis-statement. This plan is for illustrative purposes only and should be used as such by any prospective purchaser. The services, systems and appliances shown have not been tested and no guarantee as to their operability or efficiency can be given.

Made with Metropix ©2025

