



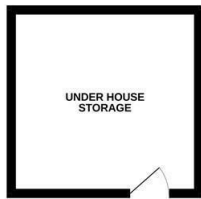
Ashburnham Road, Hastings TN35 5JH

Offers in excess of £380,000

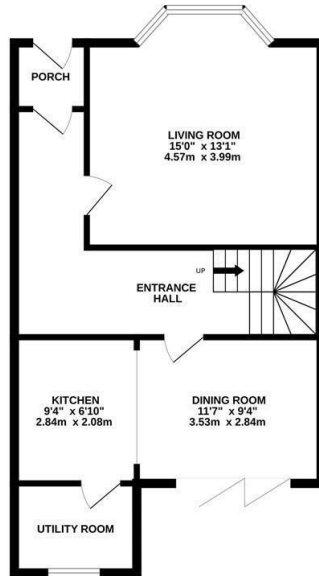


A bright and spacious three bedroom TERRACED VICTORIAN HOUSE with stunning SEA VIEWS located in a sought after Clive Vale setting. It's enviably positioned for easy access to Hastings Old Town, Hastings Country Park and nearby primary schools. Enjoying a wealth of CHARACTER FEATURES THROUGHOUT, the accommodation here is arranged as a BAY FRONTED LIVING ROOM which enjoys an OPEN FIREPLACE and built-in storage space while the OPEN PLAN KITCHEN AND DINING ROOM spans the rear of the property fitted with traditional units and benefitting from BI-FOLDING DOORS leading out to a decked area of garden. On the first floor there are three WELL PROPORTIONED BEDROOMS with the bedroom to the rear relishing picturesque views across the neighbouring rooftops towards the sea. There is also a panelled family bathroom on this floor. The rear garden is a particular feature here, it offers a raised decked space off of the dining room perfect for DINING AL-FRESCO leading down to a generous area of garden bordered by mature shrubs and trees housing a summerhouse and under-house storage. PLANNING PERMISSION has been granted to convert the loft space creating an additional bedroom and bathroom. Being sold with NO ONWARD CHAIN, this fantastic property would make the PERFECT FAMILY HOME and is not one to be missed.

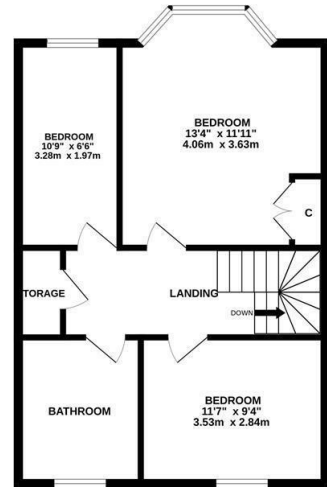
BASEMENT
140 sq.ft. (13.0 sq.m.) approx.



GROUND FLOOR
610 sq.ft. (56.7 sq.m.) approx.



1ST FLOOR
565 sq.ft. (52.5 sq.m.) approx.



TOTAL FLOOR AREA: 1316 sq.ft. (122.3 sq.m.) approx.

Whilst every attempt has been made to ensure the accuracy of the floorplan contained here, measurements of doors, windows, rooms and any other items are approximate and no responsibility is taken for any error, omission or mis-statement. This plan is for illustrative purposes only and should be used as such by any prospective purchaser. The services, systems and appliances shown have not been tested and no guarantee as to their operability or efficiency can be given.
Made with Metropix ©2025

