



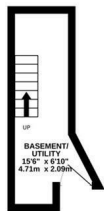
Milward Road, Hastings TN34 3RT

Offers in excess of £525,000

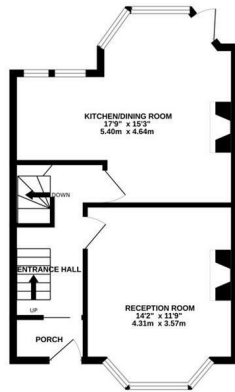


A beautifully presented four bedroom, three storey TERRACED VICTORIAN HOUSE positioned in a sought after and CENTRAL LOCATION only moments from the beach, Alexandra Park and Hastings Town centre which offers a range of shopping facilities, restaurants and there is a mainline railway station with connections to London. Enjoying a WEALTH OF CHARACTER FEATURES the accommodation here is arranged as a BAY FRONTED LIVING ROOM featuring a wood burning stove and wooden shutters while the OPEN PLAN KITCHEN AND DINING ROOM spans the rear of the property measuring an impressive 17'9 x 15'3, providing plenty of room for a full dining table to create the perfect sociable and family friendly setting. The traditional style fitted kitchen offers ample storage and worktop space along with access to the rear garden. The first floor houses two double bedrooms, both enjoying bay windows, together with a CONTEMPORARY SHOWER ROOM and an additional dressing room while the further two bedrooms can be found on the upper floor served by a family bathroom and separate W/C. The rear garden is tiered offering a variety of seating

**BASEMENT**  
TOTAL FLOOR AREA: 125.1 sq.m. approx.



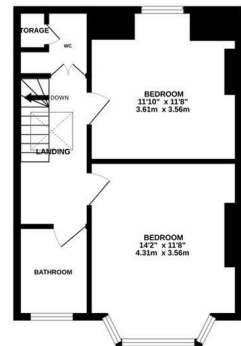
**GROUNDFLOOR**  
TOTAL FLOOR AREA: 125.1 sq.m. approx.



**1ST FLOOR**  
TOTAL FLOOR AREA: 125.1 sq.m. approx.



**2ND FLOOR**  
TOTAL FLOOR AREA: 125.1 sq.m. approx.



TOTAL FLOOR AREA : 1347 sq.ft. (125.1 sq.m.) approx.

Whilst every attempt has been made to ensure the accuracy of the floorplan contained here, measurements of doors, windows, rooms and any other items are approximate and no responsibility is taken for any error, omission or mis-statement. This plan is for illustrative purposes only and should be used as such by any prospective purchaser. The services, systems and appliances shown have not been tested and no guarantee as to their operability or efficiency can be given.  
Made with Metropix 62025

