



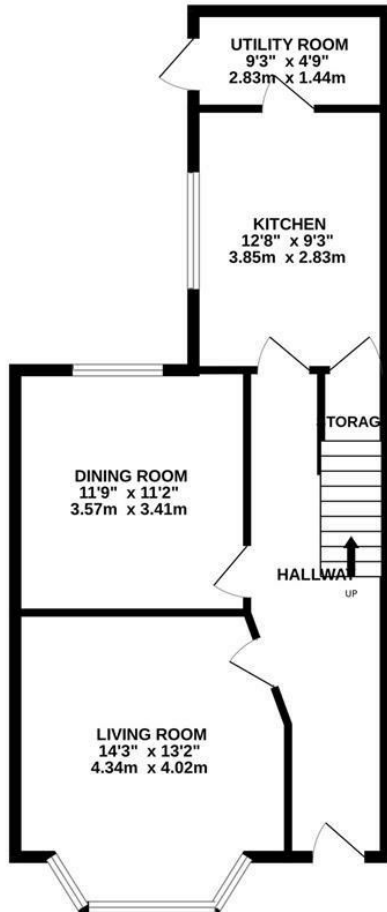
St. Thomass Road, Hastings TN34 3LG

£330,000

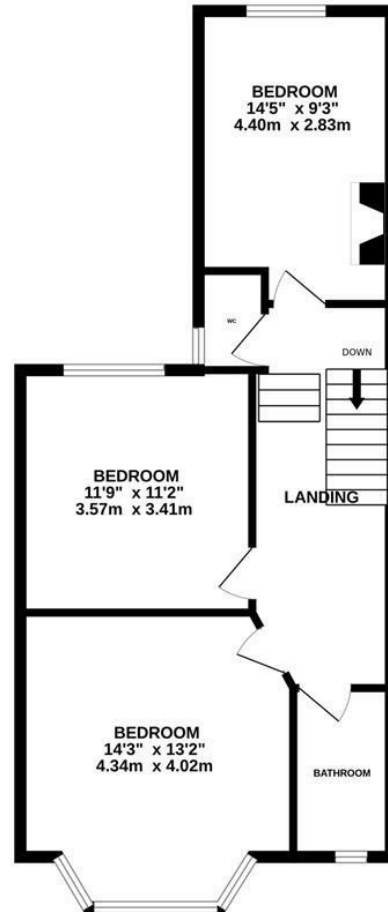


A bright and spacious three bedroom TERRACED VICTORIAN HOUSE occupying an enviable position on the West Hill. It's ideally placed within walking distance of a local shop, Ore Railway station and equidistant to Hastings Old Town and Hastings Town centre offering shopping and leisure facilities, access to the seafront and a mainline railway station with connections to London. The accommodation here is arranged as a BAY FRONTED LIVING ROOM positioned at the front of the property which enjoys an OPEN FIREPLACE, there is a SECOND RECEPTION ROOM and a FITTED KITCHEN offering ample storage and worktop space. There is also a UTILITY ROOM on this floor which benefits from access to the rear garden. The three WELL PROPORTIONED BEDROOMS can be found on the first floor together with a family bathroom and separate W/C. Externally the rear garden has been designed for LOW MAINTENANCE with a large patio space off of the kitchen making this the perfect spot to dine al-fresco followed by a raised level. Being sold with NO ONWARD CHAIN this fantastic property would make the PERFECT FAMILY HOME and is not to be missed.

GROUND FLOOR
602 sq.ft. (55.9 sq.m.) approx.



1ST FLOOR
595 sq.ft. (55.3 sq.m.) approx.



TOTAL FLOOR AREA: 1197 sq.ft. (111.2 sq.m.) approx.
 Whilst every attempt has been made to ensure the accuracy of the floorplan contained here, measurements of doors, windows, rooms and any other items are approximate and no responsibility is taken for any error, omission or mis-statement. This plan is for illustrative purposes only and should be used as such by any prospective purchaser. The services, systems and appliances shown have not been tested and no guarantee as to their operability or efficiency can be given.
 Made with Metropix ©2025

