



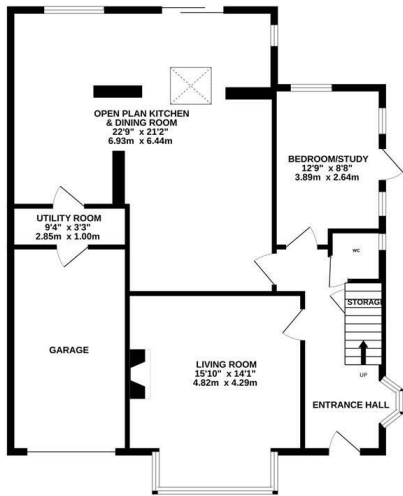
Madeira Drive, Hastings TN34 2NL

Offers in excess of £550,000

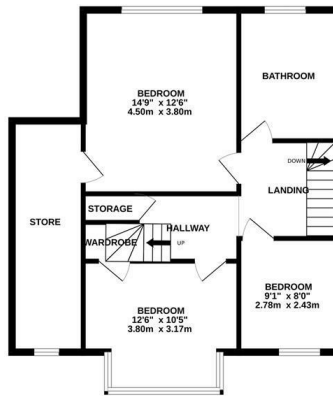


A beautifully presented four/five bedroom DETACHED FAMILY HOME with GARAGE AND PARKING situated in a sought after location within immediate reach of local shops, popular primary and secondary schools and Alexandra Park. Spanning THREE SPACIOUS STOREYS the accommodation here is arranged as a BAY FRONTED LIVING ROOM on the ground floor offering ample living space while the OPEN PLAN KITCHEN AND DINING ROOM is positioned at the rear of the property measuring an impressive 22'9 x 21'2 providing plenty of room for a full dining table. The kitchen is fitted with CONTEMPORARY UNITS and there are SLIDING DOORS opening out to the family friendly garden. There is also a UTILITY ROOM, a downstairs cloakroom and a bedroom on this floor which could be used as a study. The first floor houses THREE DOUBLE BEDROOMS together with a family bathroom where there is a corner bath and separate shower enclosure while the principal bedroom can be found on the second floor, benefitting from an EN-SUITE SHOWER ROOM. The rear bedroom also features access to a large store room and from the rear of the property there are far

GROUND FLOOR
1017 sq.ft. (94.5 sq.m.) approx.



1ST FLOOR
695 sq.ft. (64.6 sq.m.) approx.



2ND FLOOR
315 sq.ft. (29.3 sq.m.) approx.



TOTAL FLOOR AREA : 2027 sq.ft. (188.4 sq.m.) approx.

Whilst every attempt has been made to ensure the accuracy of the floorplan contained here, measurements of doors, windows, rooms and any other items are approximate and no responsibility is taken for any error, omission or mis-statement. This plan is for illustrative purposes only and should be used as such by any prospective purchaser. The services, systems and appliances shown have not been tested and no guarantee as to their operability or efficiency can be given.
Made with Metropix ©2025

