



Cambridge Gardens, Hastings TN34 1EH

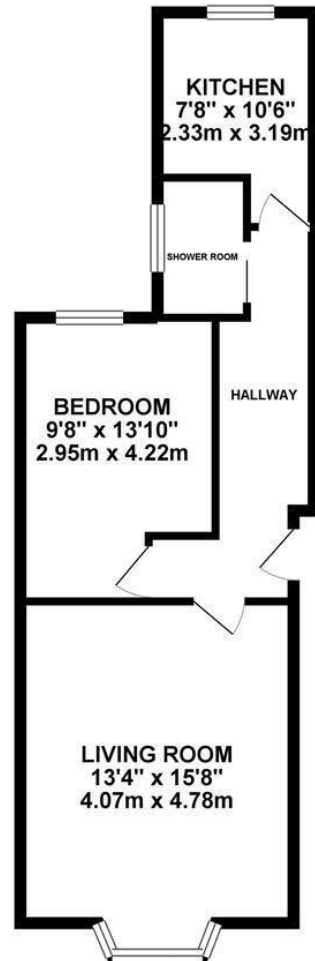
Offers in excess of £140,000



A spacious ONE BEDROOM apartment spanning the GROUND FLOOR of this period building with beautifully presented and bright accommodation. Located within Hastings town centre it's ideally placed for access to the local shops, mainline railway station and the beach. The living room enjoys a front aspect with a LARGE BAY WINDOW while the CONTEMPORARY KITCHEN is positioned at the rear of the property offering enough space for a small dining table. There is a double bedroom with two built-in storage cupboards and a separate, MODERN SHOWER ROOM. Being sold with NO ONWARD CHAIN, a SHARE OF FREEHOLD and LONG LEASE this fantastic apartment would make the PERFECT FIRST TIME HOME or investment.

- remainder of 999 year lease

GROUND FLOOR 525.00 sq. ft.
(48.77 sq. m.)



TOTAL FLOOR AREA : 525.00 sq. ft. (48.77 sq. m.) approx.

Whilst every attempt has been made to ensure the accuracy of the floorplan contained here, measurements of doors, windows, rooms and any other items are approximate and no responsibility is taken for any error, omission or mis-statement. This plan is for illustrative purposes only and should be used as such by any prospective purchaser. The services, systems and appliances shown have not been tested and no guarantee as to their operability or efficiency can be given.
Made with Matropix ©2019

