



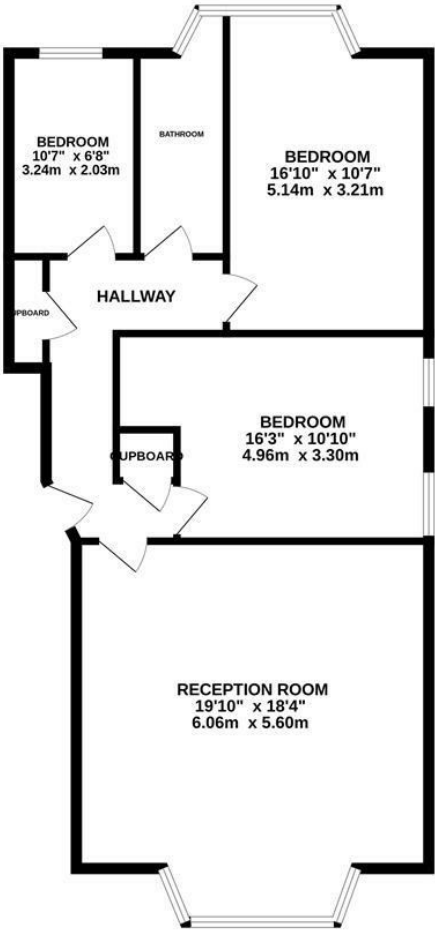
Holmesdale Gardens, Hastings TN34 1LY

Offers in excess of £285,000



An impressive THREE bedroom GROUND FLOOR APARTMENT with separate study, located in a favoured and CENTRAL POSITION just a short stroll from Hastings seafront, the beach and town centre where there are a range of shopping facilities, eateries and a mainline railway station. The accommodation here has been NEWLY REFURBISHED to offer a GRAND, BAY FRONTED LIVING SPACE which measures an impressive 19'8 x 18'4 providing plenty of space for a full dining table and is open to the kitchen. Fitted with CONTEMPORARY UNITS the kitchen offers ample storage and cupboard space housing INTEGRATED APPLIANCES. There are three bedrooms together with a MODERN FAMILY BATHROOM where there is bath with shower and screen over. Being sold with NO ONWARD CHAIN this fantastic property would make the perfect first time home or seaside retreat.

GROUND FLOOR
894 sq.ft. (83.0 sq.m.) approx.



TOTAL FLOOR AREA : 894 sq.ft. (83.0 sq.m.) approx.

Whilst every attempt has been made to ensure the accuracy of the floorplan contained here, measurements of doors, windows, rooms and any other items are approximate and no responsibility is taken for any error, omission or mis-statement. This plan is for illustrative purposes only and should be used as such by any prospective purchaser. The services, systems and appliances shown have not been tested and no guarantee as to their operability or efficiency can be given.

Made with Metropix ©2024

