



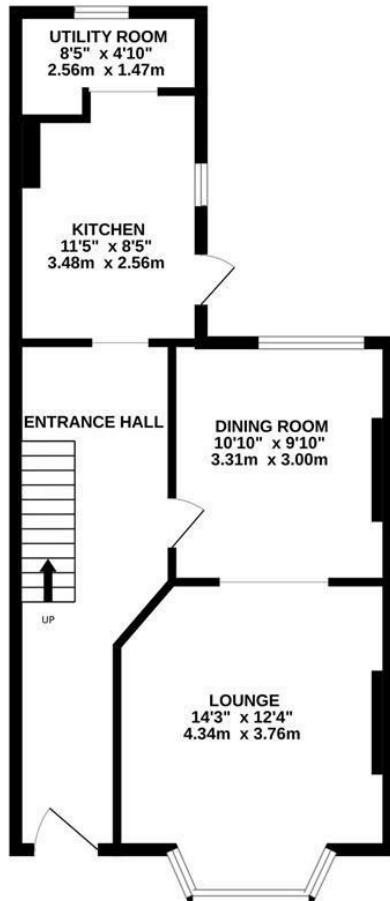
Upper South Road, St. Leonards-On-Sea TN37 6SG

Offers in excess of £275,000



A spacious and well presented TWO BEDROOM terraced Victorian house situated in a sought after location within easy reach of nearby shops, both Hastings Town centre and the hub of St. Leonards On Sea where there are a mainline railway station. Alexandra Park is also only a short stroll away along with good primary and secondary schools. Spanning two storeys the accommodation here is arranged as a BAY FRONTED LIVING ROOM which is open to the DINING ROOM to create a family friendly space while the FITTED KITCHEN is positioned at the rear of the property benefitting from ample storage and access to the garden. There is also a HANDY UTILITY ROOM on this floor. The first floor houses TWO DOUBLE BEDROOMS with the principle bedroom measuring an impressive 15'4 x 11'9 together with a family bathroom which can be found on the half landing. The enclosed rear garden has been designed for LOW MAINTENANCE with a LARGE PATIO SPACE perfect for dining al-fresco and there is also a storage shed. Set in a CONVENIENT LOCATION this fantastic property would make the PERFECT FAMILY HOME and is not one to be missed.

GROUND FLOOR
522 sq.ft. (48.5 sq.m.) approx.



1ST FLOOR
443 sq.ft. (41.2 sq.m.) approx.



TOTAL FLOOR AREA: 965 sq.ft. (89.7 sq.m.) approx.

Whilst every attempt has been made to ensure the accuracy of the floorplan contained here, measurements of doors, windows, rooms and any other items are approximate and no responsibility is taken for any error, omission or mis-statement. This plan is for illustrative purposes only and should be used as such by any prospective purchaser. The services, systems and appliances shown have not been tested and no guarantee as to their operability or efficiency can be given.
Made with Metropix ©2024

