



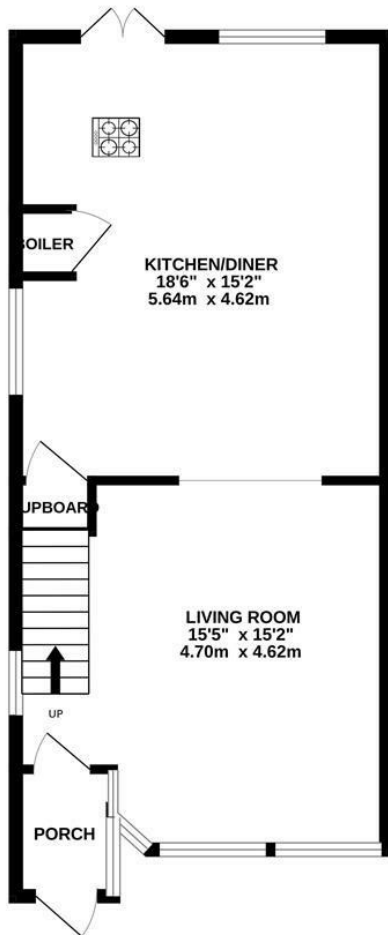
Moscow Road, Hastings TN35 5LP

Offers in excess of £330,000

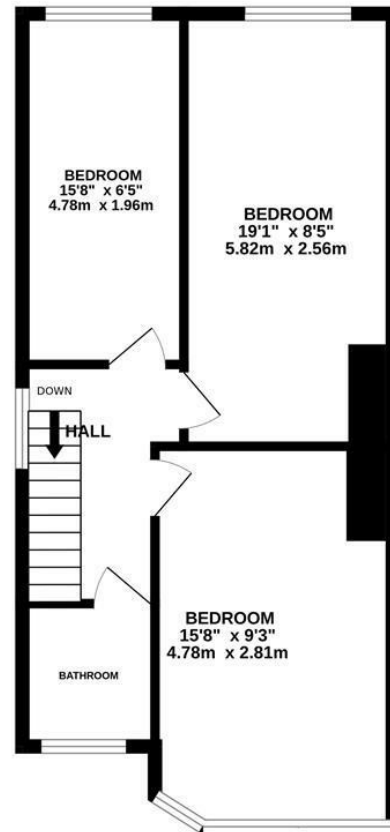


A beautiful THREE BEDROOM semi-detached house situated in a highly sought after CLIVE VALE LOCATION. It's ideally positioned within WALKING DISTANCE OF THE BEACH, Hastings Country Park and the Old Town where there are a range of independent shops and eateries. The accommodation here has been extended to create a STYLISH AND CONTEMPORARY HOME that retains its 1930's charm, the ground floor is arranged as a bay fronted living space featuring a WOOD BURNING STOVE which is open to the LARGE EAT-IN KITCHEN, positioned at the rear of the property with double doors leading out to the garden. It's fitted with modern units housing ample storage space and there is a CENTRAL ISLAND offering plenty of seating space to create the perfect sociable setting. On the first floor there are THREE DOUBLE BEDROOMS along with a family bathroom where there is a bath with a shower and screen over. The landscaped rear garden is a particular feature here, it offers an area of patio off of the kitchen which provides an ideal spot to DINE AL-FRESCO, followed by a raised level of artificial lawn leading to a decked space. There is also a newly constructed GARDEN BAR while to the front of the property there is OFF ROAD PARKING FOR TWO VEHICLES. Enjoying generous proportions and high end fittings this stunning home is not to be missed.

GROUND FLOOR
509 sq.ft. (47.3 sq.m.) approx.



1ST FLOOR
471 sq.ft. (43.8 sq.m.) approx.



TOTAL FLOOR AREA : 980 sq.ft (91.1 sq.m.) approx.

Whilst every attempt has been made to ensure the accuracy of the floorplan contained here, measurements of doors, windows, rooms and any other items are approximate and no responsibility is taken for any error, omission or mis-statement. This plan is for illustrative purposes only and should be used as such by any prospective purchaser. The services, systems and appliances shown have not been tested and no guarantee as to their operability or efficiency can be given.

Made with Metropix ©2024

