



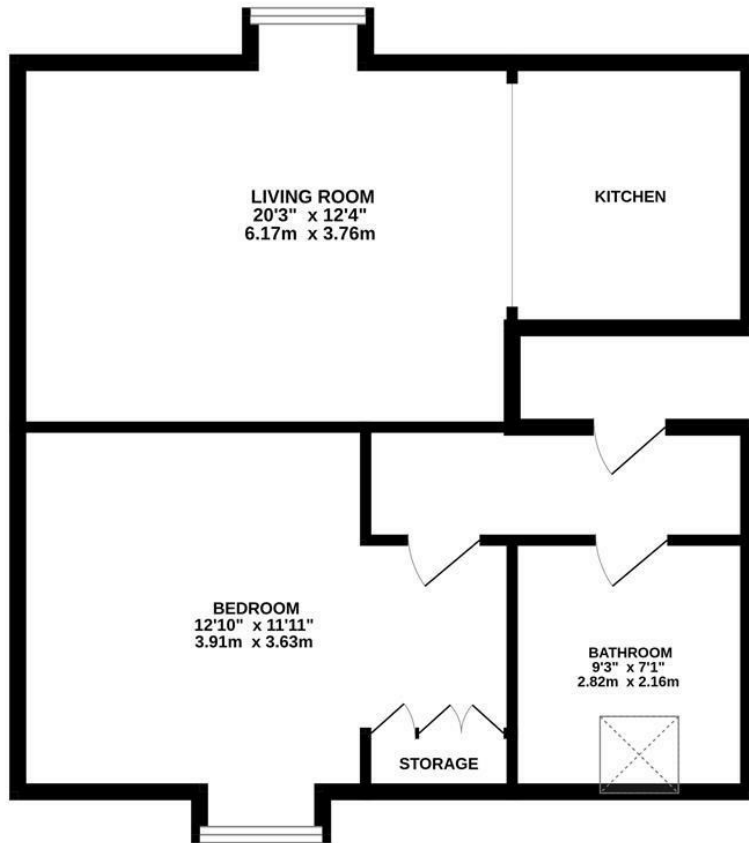
## Cornwallis Gardens, Hastings TN34 1LX

Offers in excess of £130,000



A bright and spacious ONE BEDROOM APARTMENT spanning the top floor of this ATTRACTIVE PERIOD PROPERTY located adjacent to Cornwallis Gardens. The accommodation is arranged as an OPEN PLAN LIVING SPACE with a fitted kitchen and an EXPOSED BRICKWORK WALL, there is a separate double bedroom with BUILT-IN STORAGE and a large bathroom where there is a bath with a shower over. Being sold with a long lease and NO ONWARD CHAIN this fantastic property would make the perfect first time home or investment.

TOP FLOOR  
634 sq.ft. (58.9 sq.m.) approx.



TOTAL FLOOR AREA : 634 sq.ft. (58.9 sq.m.) approx.

Whilst every attempt has been made to ensure the accuracy of the floorplan contained here, measurements of doors, windows, rooms and any other items are approximate and no responsibility is taken for any error, omission or mis-statement. This plan is for illustrative purposes only and should be used as such by any prospective purchaser. The services, systems and appliances shown have not been tested and no guarantee as to their operability or efficiency can be given.  
Made with Metropix ©2024

