



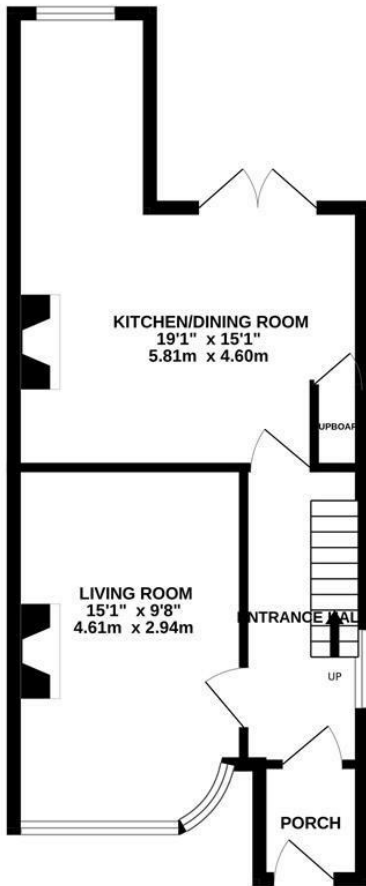
Parker Road, Hastings TN34 3UA

Offers in excess of £325,000

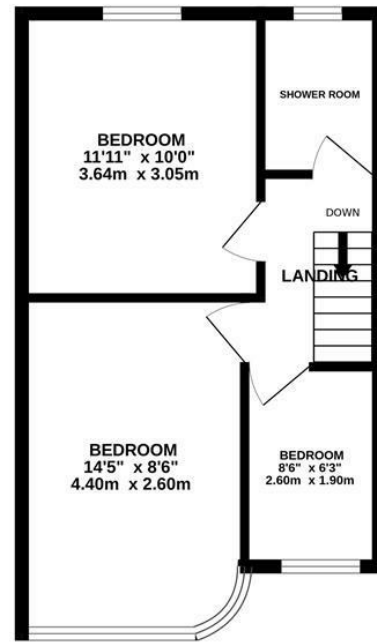


A well presented three bedroom SEMI-DETACHED HOUSE with OFF ROAD PARKING situated in an enviable location within easy reach of a range of local shops, good bus routes and Ore railway station. Spanning two storeys, the accommodation here is arranged as a BRIGHT LIVING ROOM positioned at the front of the property which enjoys a FEATURE FIREPLACE while the OPEN PLAN KITCHEN AND DINING ROOM spans the rear benefitting from DOUBLE DOORS leading out to the garden, a WOOD BURNING STOVE and the kitchen is FITTED WITH MODERN UNITS to provide ample storage and worktop space. The first floor houses three bedrooms, two of which are GENEROUS DOUBLE ROOMS, together with a STYLISH SHOWER ROOM. The rear garden is a particular feature here, it offers an area of patio off of the dining room creating the ideal spot to entertain or DINE AL-FRESCO, followed by tiers of lawn bordered by mature shrubs and trees leading down to a handy greenhouse. At the front of the property there is a DRIVEWAY providing off road parking for two vehicles.

GROUND FLOOR
417 sq.ft. (38.8 sq.m.) approx.



1ST FLOOR
372 sq.ft. (34.6 sq.m.) approx.



TOTAL FLOOR AREA: 789 sq.ft. (73.3 sq.m.) approx.

Whilst every attempt has been made to ensure the accuracy of the floorplan contained here, measurements of doors, windows, rooms and any other items are approximate and no responsibility is taken for any error, omission or mis-statement. This plan is for illustrative purposes only and should be used as such by any prospective purchaser. The services, systems and appliances shown have not been tested and no guarantee as to their operability or efficiency can be given.
Made with Metropix ©2024

