



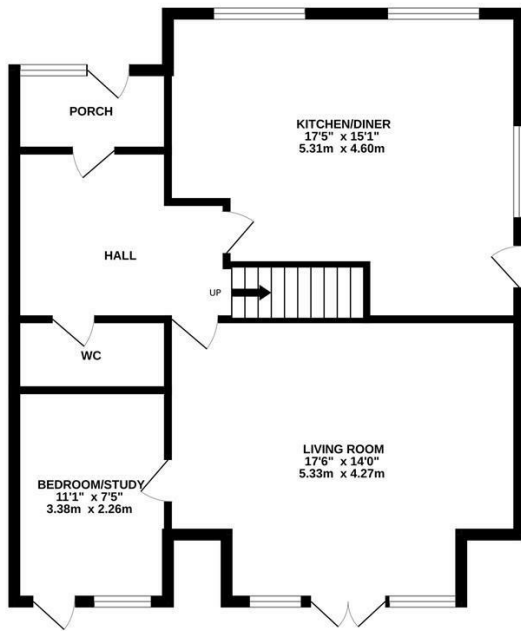
Hillside Road, Hastings TN34 2QY

Offers in excess of £400,000

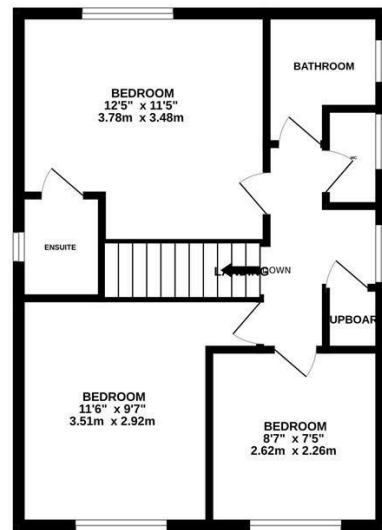


A beautifully presented FOUR BEDROOM DETACHED HOUSE with off road parking situated in a sought after location, close by to Alexandra Park and within easy reach of local shops, primary and secondary schools and the Conquest Hospital. Spanning two storeys the accommodation here is perfect for family life, offering a bright and spacious living room positioned at the rear of the property enjoying double doors leading out to the garden. The KITCHEN AND DINING ROOM is separate and benefits from modern fitted units and plenty of room for a full dining table, there is also one bedroom on this floor which could also be used as a study together with a handy DOWNSTAIRS CLOAKROOM. Three further bedrooms can be found on the upper floor along with a family bathroom. The principle bedroom enjoys BUILT-IN WARDROBES and a stylish ENSUITE SHOWER ROOM. The rear garden provides a large patio space off of the living room creating the perfect spot to dine al-fresco followed by a generous EXPANSE OF LAWN housing a SUMMER HOUSE and there is access to the DETACHED GARAGE. At the front of the property there is a DRIVEWAY providing off road parking for multiple vehicles.

GROUND FLOOR
695 sq.ft. (64.6 sq.m.) approx.



1ST FLOOR
460 sq.ft. (42.8 sq.m.) approx.



TOTAL FLOOR AREA: 1155 sq.ft. (107.3 sq.m.) approx.

Whilst every attempt has been made to ensure the accuracy of the floorplan contained here, measurements of doors, windows, rooms and any other items are approximate and no responsibility is taken for any error, omission or mis-statement. This plan is for illustrative purposes only and should be used as such by any prospective purchaser. The services, systems and appliances shown have not been tested and no guarantee as to their operability or efficiency can be given.
Made with Metropix ©2024

