



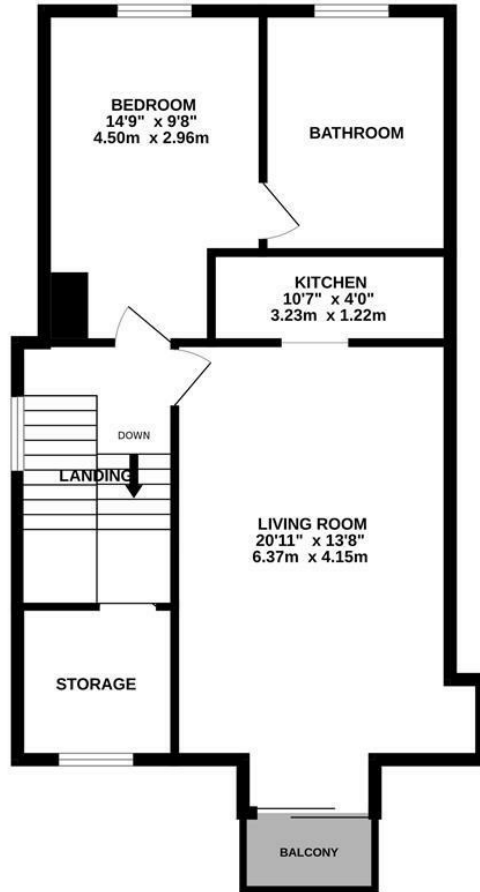
## Cornwallis Gardens, Hastings TN34 1LP

Offers in excess of £130,000



A deceptively spacious ONE BEDROOM APARTMENT with SEA VIEWS spanning the TOP FLOOR of this period residence. It's located in a central position just moments from the beach, Hastings Town centre and mainline railway station which benefits from connections to London. The accommodation here is arranged as a BRIGHT LIVING ROOM positioned at the rear of the property which enjoys a BALCONY overlooking the sea and offers plenty of space for a full dining table, there is a separate FITTED KITCHEN and an ADDITIONAL STORAGE ROOM. The WELL PROPORTIONED BEDROOM enjoys a front aspect and leads through to the EN-SUITE BATHROOM where there is a bath with shower and screen over. Being sold with NO ONWARD CHAIN, this fantastic property would make the PERFECT FIRST TIME HOME or investment and is not to be missed.

TOP FLOOR  
635 sq.ft. (59.0 sq.m.) approx.



TOTAL FLOOR AREA : 635 sq.ft. (59.0 sq.m.) approx.

Whilst every attempt has been made to ensure the accuracy of the floorplan contained here, measurements of doors, windows, rooms and any other items are approximate and no responsibility is taken for any error, omission or mis-statement. This plan is for illustrative purposes only and should be used as such by any prospective purchaser. The services, systems and appliances shown have not been tested and no guarantee as to their operability or efficiency can be given.  
Made with Metropix ©2024

