



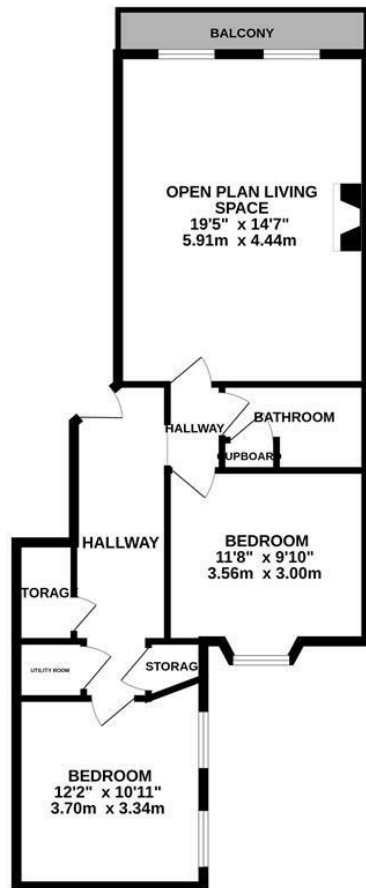
Marina, St Leonards-On-Sea TN38 0BJ

Offers in excess of £285,000



A beautifully presented TWO BEDROOM APARTMENT with STUNNING SEA VIEWS situated in a prime seafront position. The apartment enjoys an IDYLIC LOCATION sitting adjacent to the beach and is also just a short stroll from the hub of St. Leonards On Sea where you'll find local independent shops, award winning eateries and galleries, along with a mainline railway station with connections to London. Found on the GROUND FLOOR of this PERIOD RESIDENCE, the accommodation here enjoys a WEALTH OF ORIGINAL FEATURES including sash windows, high ceilings and intricate cornicing throughout. There is an OPEN PLAN LIVING SPACE with a WORKING FIREPLACE which measures an impressive 19'5 x 14'7 and relishes two large windows FRAMING A SOUTHERLY aspect and giving access to the WROUGHT IRON BALCONY while the kitchen is FITTED WITH CONTEMPORARY UNITS to provide ample storage and worktop space. The TWO DOUBLE BEDROOMS sit at the rear of the property together with the STYLISH FAMILY BATHROOM where there is a bath with shower and screen over. Set in a SOUGHT AFTER LOCATION, this fantastic property would make the PERFECT SEASIDE RETREAT and is not to be missed.

GROUND FLOOR
713 sq.ft. (66.3 sq.m.) approx.



TOTAL FLOOR AREA : 713 sq.ft. (66.3 sq.m.) approx.

Whilst every attempt has been made to ensure the accuracy of the floorplan contained here, measurements of doors, windows, rooms and any other items are approximate and no responsibility is taken for any error, omission or mis-statement. This plan is for illustrative purposes only and should be used as such by any prospective purchaser. The services, systems and appliances shown have not been tested and no guarantee as to their operability or efficiency can be given.
Made with Metropix ©2024

