

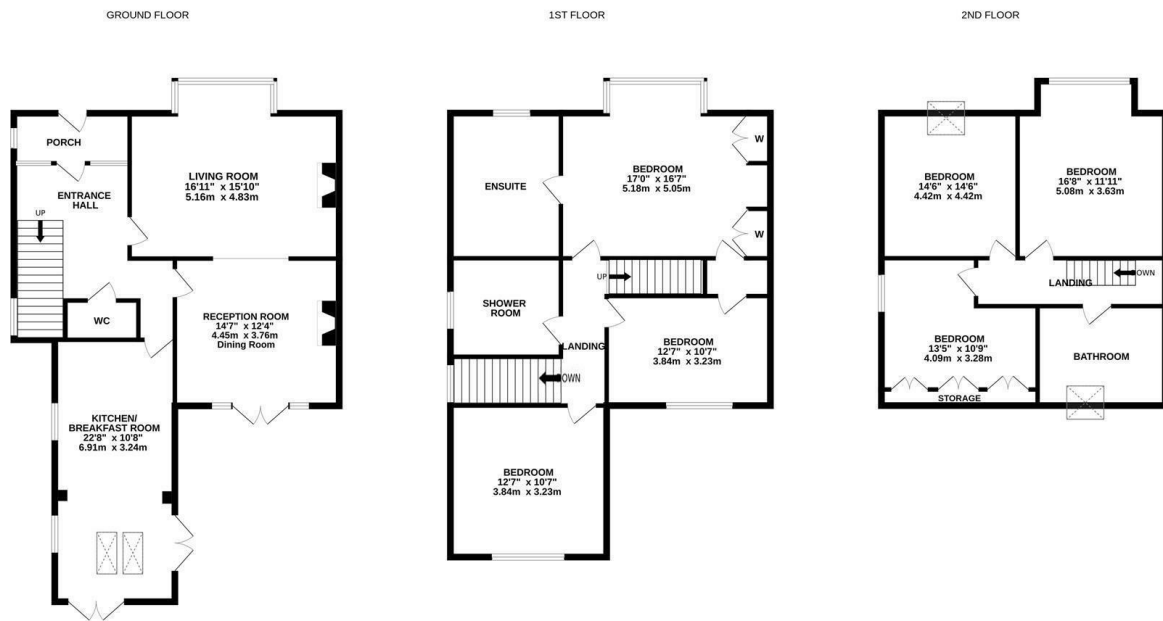


Lower Park Road, Hastings TN34 2LD

Offers in excess of £800,000



This beautiful six bedroom, THREE STOREY VICTORIAN HOUSE stands in an UNRIVALLED LOCATION within the Conservation area, adjacent to Grade II star listed Alexandra Park with all its amenities. The house is within walking distance of the seafront and Hastings Town centre offering shopping and leisure facilities, along with good schools and the mainline railway station connecting to London, Ashford International and Brighton. This home benefits from residents only parking. Having been EXTENSIVELY REFURBISHED the accommodation here is presented to an EXCELLENT STANDARD THROUGHOUT and retains a WEALTH OF ORIGINAL FEATURES including high ceilings and exposed floorboards. From the WELCOMING ENTRANCE HALL the ground floor accommodation comprises a principal living room with a large bay window framing a lovely outlook over the Park. This opens to a second reception room with double doors to the rear, creating a bright, dual aspect space, both rooms equipped with WOOD BURNING STOVES. The kitchen/breakfast room is positioned to the rear of the property and has been recently fitted with modern units



Whilst every attempt has been made to ensure the accuracy of the floorplan contained here, measurements of doors, windows, rooms and any other items are approximate and no responsibility is taken for any error, omission or mis-statement. This plan is for illustrative purposes only and should be used as such by any prospective purchaser. The services, systems and appliances shown have not been tested and no guarantee as to their operability or efficiency can be given.
 Made with Metropix ©2024

