



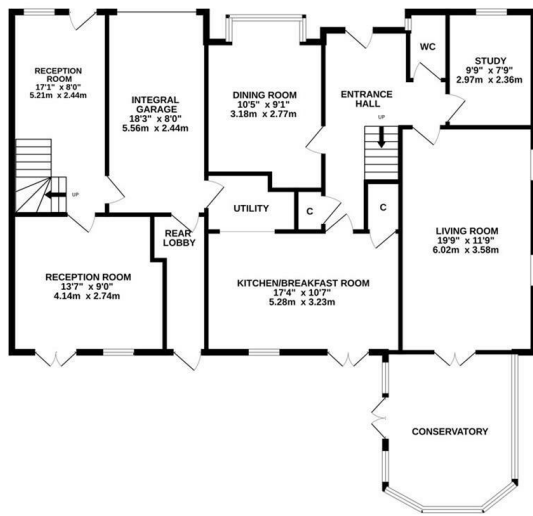
## Johnson Close, St. Leonards-On-Sea TN37 7BG

Offers in excess of £700,000

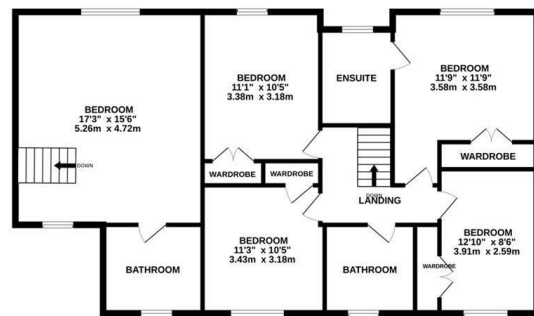


A deceptively spacious six bedroom house with OFF ROAD PARKING AND GARAGE, the versatile accommodation could be arranged as a four/five bedroom house and a ONE BEDROOM SELF CONTAINED ANNEX making it ideally suited for those seeking dual accommodation. Situated in a quiet and PRESTIGIOUS CUL-DE-SAC on the Northern outskirts of St. Leonards it's within easy reach of Battle where there are excellent schools and a mainline railway station which benefits from connections to London. The accommodation here is well presented throughout offering the PERFECT SPACE FOR FAMILY LIFE with the ground floor arranged as a dual aspect living room with double doors leading out to the conservatory, there is a SEPARATE DINING ROOM, a study which could be used as the fifth bedroom and a downstairs cloakroom. The kitchen and dining space is fitted with contemporary units and enjoys separate utility area, a breakfast bar and double doors leading out to the rear garden. On the first floor there are four double bedrooms, all fitted with BUILT-IN WARDROBES, together with a family bathroom and the principal bedroom also enjoys

GROUND FLOOR



1ST FLOOR



Whilst every attempt has been made to ensure the accuracy of the floorplan contained here, measurements of doors, windows, rooms and any other items are approximate and no responsibility is taken for any error, omission or mis-statement. This plan is for illustrative purposes only and should be used as such by any prospective purchaser. The services, systems and appliances shown have not been tested and no guarantee is to their operability or efficiency can be given.  
Made with Metropix ©2024

