



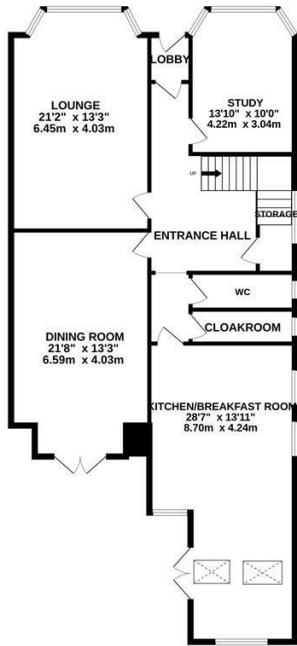
St. Matthews Gardens, St. Leonards-On-Sea TN38 0TS

Offers in excess of £900,000

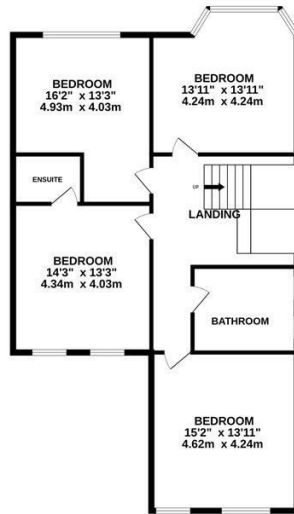


An attractive seven bedroom SEMI-DETACHED VICTORIAN HOUSE located in a SOUGHT AFTER St Leonards setting, with SEA VIEWS. It's enviably positioned around a private residents gardens and within walking distance to supermarkets, GP surgeries, Alexandra Park and Kings Road/the hub of St. Leonards On Sea. There are two mainline railway stations with connections to London just minutes away, and good/outstanding schools and nursery within walking distance. The accommodation here has been REFURBISHED AND REMODELLED to a beautiful standard throughout, creating a STYLISH AND CONTEMPORARY FAMILY HOME with an abundance of CHARACTER FEATURES including original floorboards, fireplaces and sash windows. Arranged over THREE SPACIOUS STOREYS, you enter into a large and WELCOMING ENTRANCE HALL which leads through to the BAY FRONTED LIVING ROOM where there is an OPEN FIREPLACE. There is also a BAY FRONTED study and SEPARATE DINING ROOM which sits at the rear, benefitting from Crittall style doors leading out to the garden. The OPEN PLAN KITCHEN provides the perfect sociable setting with

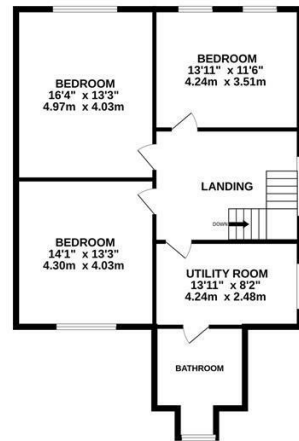
GROUND FLOOR



1ST FLOOR



2ND FLOOR



Whilst every attempt has been made to ensure the accuracy of the floorplan contained here, measurements of doors, windows, rooms and any other items are approximate and no responsibility is taken for any error, omission or mis-statement. This plan is for illustrative purposes only and should be used as such by any prospective purchaser. The services, systems and appliances shown have not been tested and no guarantee as to their operability or efficiency can be given.
Made with Metropix ©2024

