



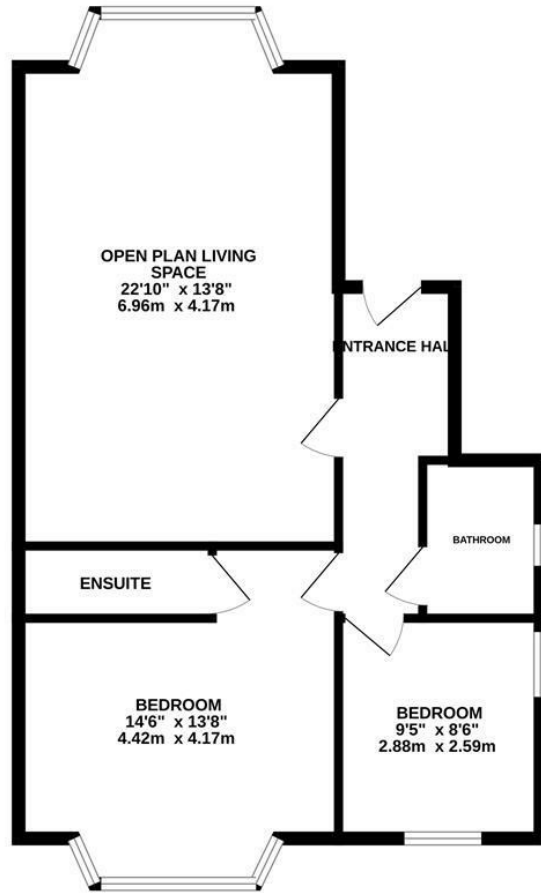
Cornwallis Gardens, Hastings TN34 1LR

Offers in excess of £235,000



Beautifully presented two bedroom GARDEN APARTMENT set in a CENTRAL POSITION close to Hastings Town centre where there are a range of shopping facilities, a mainline railway station with connections to London and the beach. The accommodation here spans the GROUND FLOOR of this period residence and is arranged as a GENEROUS BAY FRONTED LIVING ROOM offering plenty of space for a full dining table and is open to the MODERN FITTED KITCHEN which provides ample storage and INTEGRATED APPLIANCES. There are TWO DOUBLE BEDROOMS with the main bedroom enjoying a rear aspect and a STYLISH EN-SUITE SHOWER ROOM together with a separate family bathroom where there is a bath with shower and screen over. The rear garden is a particular feature here, it provides an area of lawn and a small patio space making this the perfect space to entertain or DINE AL-FRESCO. Being sold with NO ONWARD CHAIN, this fantastic property would make the perfect SEASIDE RETREAT and is not to be missed.

GROUND FLOOR
663 sq.ft. (61.6 sq.m.) approx.



TOTAL FLOOR AREA : 663 sq.ft. (61.6 sq.m.) approx.

Whilst every attempt has been made to ensure the accuracy of the floorplan contained here, measurements of doors, windows, rooms and any other items are approximate and no responsibility is taken for any error, omission or mis-statement. This plan is for illustrative purposes only and should be used as such by any prospective purchaser. The services, systems and appliances shown have not been tested and no guarantee as to their operability or efficiency can be given.
Made with Metropix ©2023

