

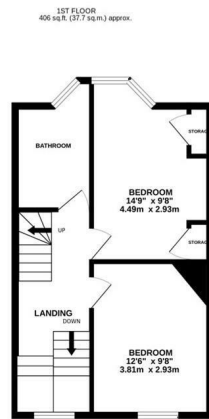
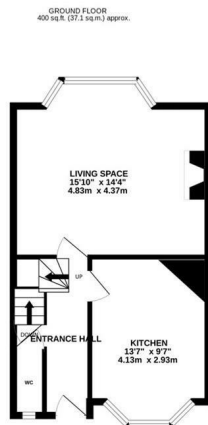
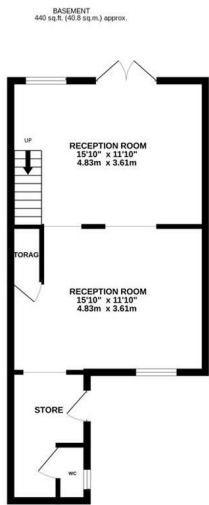


Plynlmmon Road, Hastings TN34 3LX

Offers in excess of £525,000

4 2 1

A spacious FOUR BEDROOM TERRACED FAMILY HOME set in a favoured location on the WEST HILL. Positioned just a short stroll from both the Old Town and Hastings Town centre it's perfectly placed to enjoy LIFE BY THE SEA. The accommodation here enjoys a WEALTH OF ORIGINAL FEATURES spanning FOUR STOREYS and offering a VERSATILE LAYOUT which is perfectly suited for family life. It's arranged as a BRIGHT LIVING SPACE on the ground floor with a bay window framing STUNNING SEA VIEWS, there is plenty of room for a full dining table creating the ideal sociable setting and the FITTED KITCHEN is also found on this floor along with a handy DOWNSTAIRS CLOAKROOM while the lower ground floor provides a large RECEPTION ROOM which benefits from double doors leading out to the garden. This space also has the potential for dual accommodation with a separate lower ground floor entrance along with a W/C. The four bedrooms span the two upper floors together with a family bathroom on the first floor. The principal bedroom sits on the top floor benefitting from a rear aspect and enjoying expansive southerly views, there is also a W/C



TOTAL FLOOR AREA: 1644 sq.ft. (152.7 sq.m.) approx.

Whilst every attempt has been made to ensure the accuracy of the floorplan contained here, measurements of doors, windows, rooms and any other items are approximate and no responsibility is taken for any error, omission or mis-statement. This plan is for illustrative purposes only and should be used as such by any prospective purchaser. The services, systems and appliances shown have not been tested and no guarantee as to their operability or efficiency can be given.
Made with Metropix ©2024

