



Priory Avenue, Hastings TN34 1UQ

Offers in excess of £650,000

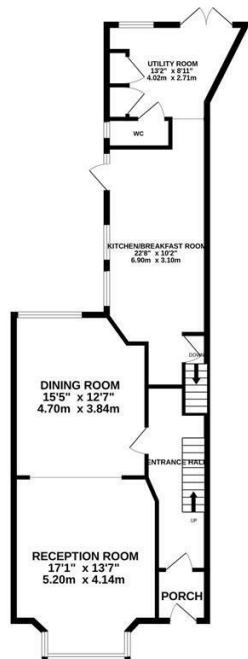


An impressive four bedroom END OF TERRACE EDWARDIAN HOUSE with OFF ROAD PARKING and SEA VIEWS located in a central position just a few MOMENTS FROM THE BEACH and Hastings Town Centre where there are a range of shopping facilities and a mainline railway station with connections to London. Spanning THREE SPACIOUS STOREYS the accommodation here enjoys generous proportions with the ground floor arranged as a bright BAY FRONTED LIVING SPACE which is open to the dining room to create the ideal social space while the FITTED KITCHEN/BREAKFAST ROOM is situated at the rear of the property providing ample storage space and access out to the rear garden. There is also a handy DOWNSTAIRS CLOAKROOM W/C and additional utility space on this floor. Two of the four bedrooms can be found on the first floor with the main bedroom enjoying a 'JACK AND JILL' BATHROOM and there is also a guest bedroom benefitting from an EN-SUITE SHOWER ROOM, while the further two bedrooms can be found on the upper floor relishing stunning views towards the sea together with a shower room. There is also a CELLAR to offer additional

BASEMENT
145 SQ. FT. (13.4 SQ. M.) APPROX.



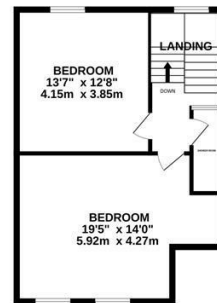
GROUND FLOOR
622 SQ. FT. (57.5 SQ. M.) APPROX.



1ST FLOOR
696 SQ. FT. (64.5 SQ. M.) APPROX.



2ND FLOOR
111 SQ. FT. (10.3 SQ. M.) APPROX.



TOTAL FLOOR AREA : 2186 sq.ft. (203.1 sq.m.) approx.

Whilst every attempt has been made to ensure the accuracy of the floorplan contained here, measurements of doors, windows, rooms and any other items are approximate and no responsibility is taken for any error, omission or mis-statement. This plan is for illustrative purposes only and should be used as such by any prospective purchaser. The services, systems and appliances shown have not been tested and no guarantee as to their operability or efficiency can be given.
Made with Metroplex 6/2024

