



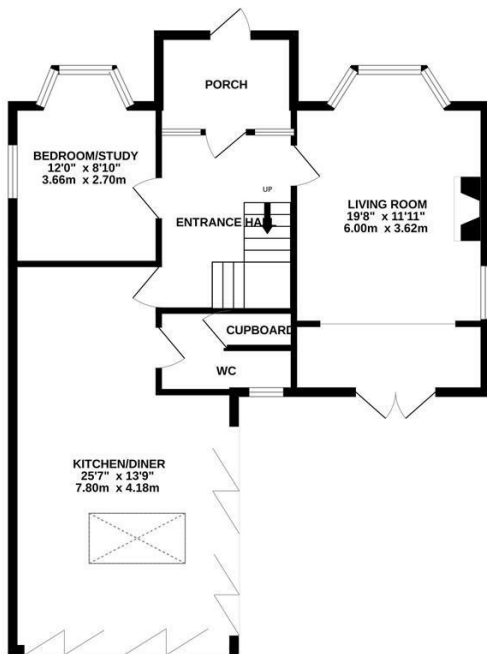
## The Ridge, Hastings TN34 2RR

Offers in excess of £700,000

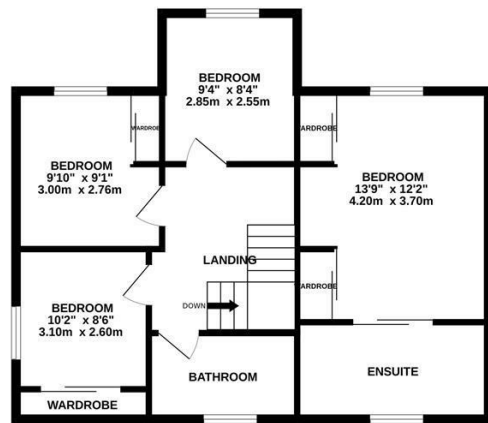


An impressive four/five bedroom DETACHED HOUSE with OFF ROAD PARKING situated in a sought after location. It is enviably positioned within easy reach of local shops, good transport links and the Conquest Hospital. Spanning TWO SPACIOUS STOREYS the accommodation here offers a VERSATILE LAYOUT which is perfect for family life with the ground floor arranged as a BAY FRONTED LIVING ROOM which enjoys a WOOD BURNING STOVE and double doors leading out to the garden, creating a BRIGHT DUAL ASPECT. The CONTEMPORARY EAT-IN KITCHEN spans the rear of the property measuring an impressive 25'7 x 13'9, providing plenty of space for a full dining table and benefitting from two sets of BI-FOLD DOORS brining a sense of indoor/outdoor living. There is a central island/breakfast bar and the kitchen houses INTEGRATED APPLIANCES, there is also a DOWNSTAIRS CLOAKROOM along with the fifth bedroom or potential study. On the first floor there are four bedrooms, three of which are generous double rooms together with a STYLISH FAMILY BATHROOM where there is a bath and separate shower enclosure. Three of the bedrooms enjoy

GROUND FLOOR  
792 sq.ft. (73.5 sq.m.) approx.



1ST FLOOR  
636 sq.ft. (59.1 sq.m.) approx.



TOTAL FLOOR AREA: 1428 sq.ft. (132.6 sq.m.) approx.

Whilst every attempt has been made to ensure the accuracy of the floorplan contained here, measurements of doors, windows, rooms and any other items are approximate and no responsibility is taken for any error, omission or mis-statement. This plan is for illustrative purposes only and should be used as such by any prospective purchaser. The services, systems and appliances shown have not been tested and no guarantee as to their operability or efficiency can be given.  
Made with Metropix ©2024

