



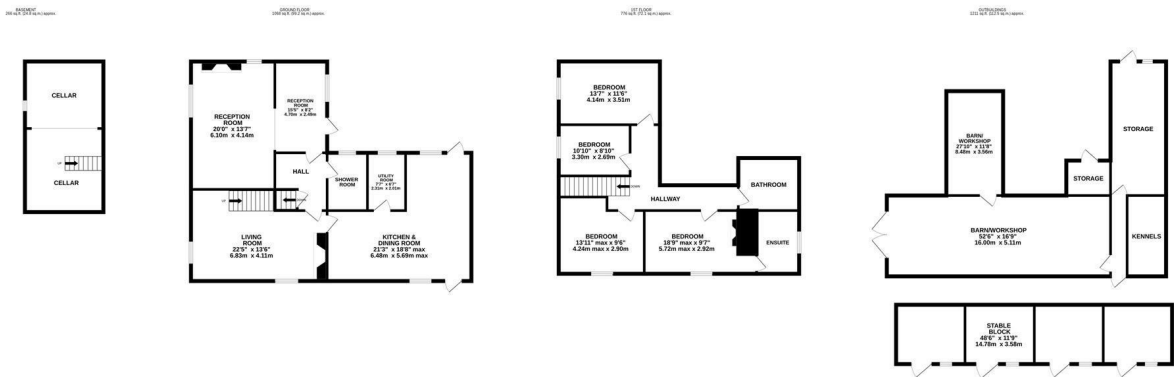
Hastings Road, Battle TN33 0TU

£1,700,000



For sale via secure sale online bidding: terms and conditions apply.

A rare opportunity to acquire a 17th century DETACHED FARMHOUSE with various outbuildings which have PLANNING PERMISSION FOR CONVERSION, set within private grounds of approximately 14 ACRES. It's enviably positioned within easy reach of countryside walks, traditional pubs, Battle High Street, Battle and Crowhurst railway stations and within the catchment area for Claverham Community College.



TOTAL FLOOR AREA: 3321 sq. ft. (308.5 sq.m.) approx.

Whilst every attempt has been made to ensure the accuracy of the floorplan contained here, measurements of doors, windows, rooms and any other items are approximate and no responsibility is taken for any error, omission or mis-statement. This plan is for illustrative purposes only and should be used as such by any prospective purchaser. The services, systems and appliances shown have not been tested and no guarantee as to their operability or efficiency can be given.
 Made with Metroplan ©2024

