

South Terrace, Hastings TN34 1SA

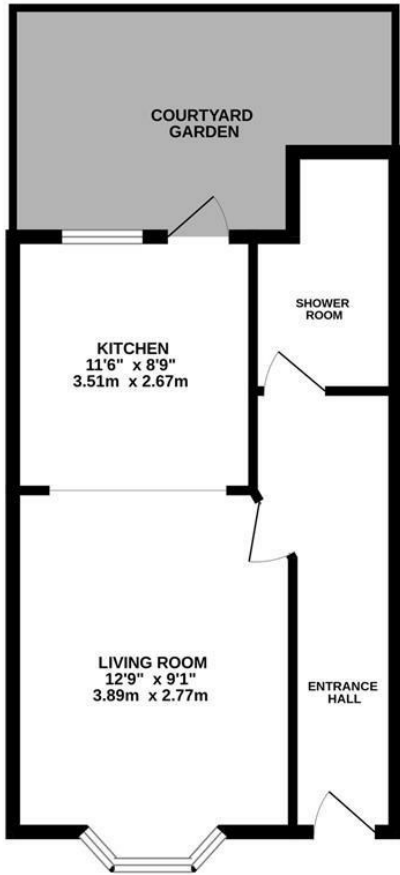
£140,000



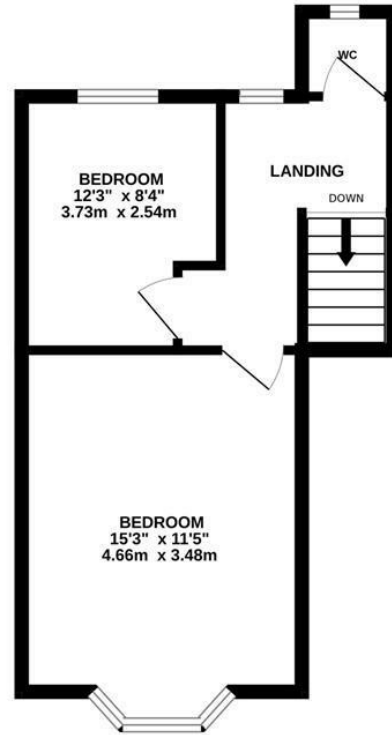
Being Sold via Secure Sale online bidding. Terms & Conditions apply. Starting Bid £140,000. This property will be legally prepared enabling any interested buyer to secure the property immediately once their bid/offer has been accepted. Ultimately a transparent process which provides speed, security and certainty for all parties. CASH BUYERS ONLY.

A two bedroom maisonette with a private entrance and COURTYARD GARDEN located in Hastings Town centre. The accommodation is a blank canvas in need of refurbishment and offers HUGE SCOPE FOR POTENTIAL. The lower ground floor is arranged as a BAY FRONTED LIVING ROOM which is open to the kitchen which leads out to the courtyard garden. There is also a shower room on the lower floor while the ground floor houses TWO BEDROOMS along with a w/c on the half landing. Being sold with NO ONWARD CHAIN this fantastic property would make an IDEAL INVESTMENT.

GROUND FLOOR
400 sq.ft. (37.2 sq.m.) approx.



1ST FLOOR
335 sq.ft. (31.1 sq.m.) approx.



TOTAL FLOOR AREA : 735 sq.ft. (68.3 sq.m.) approx.

Whilst every attempt has been made to ensure the accuracy of the floorplans contained here, measurements of doors, windows, rooms and any other items are approximate and no responsibility is taken for any error, omission or mis-statement. This plan is for illustrative purposes only and should be used as such by any prospective purchaser. The services, systems and appliances shown have not been tested and no guarantee as to their operability or efficiency can be given.
Made with Metropix ©2024

