



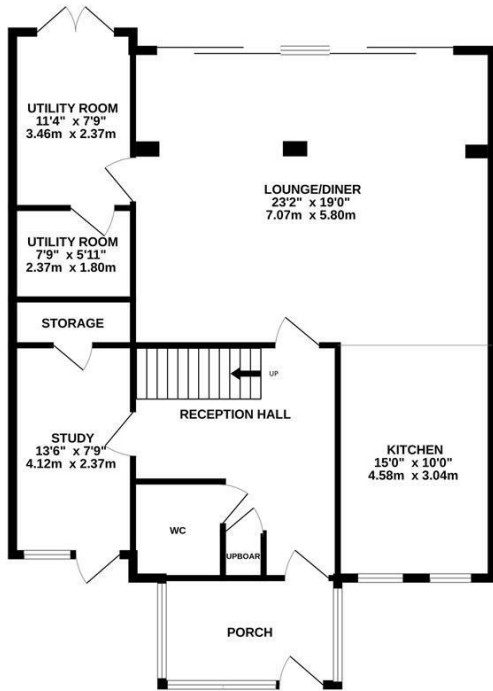
The Ridge, Hastings TN34 2RJ

Offers in excess of £575,000

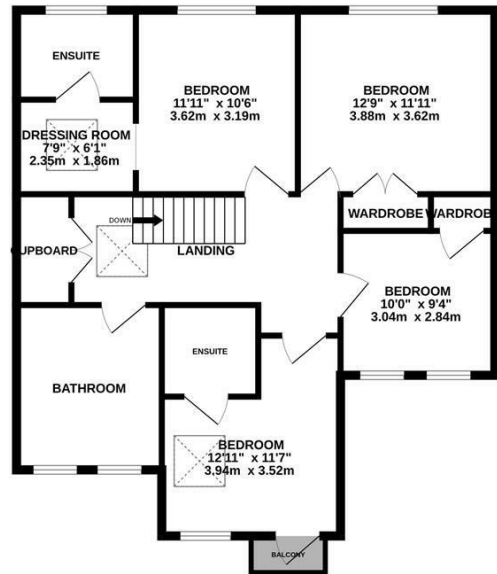


Impressive four/five bedroom DETACHED HOUSE with a GATED DRIVEWAY and off road parking set in a sought after location. It is enviably positioned within easy reach of local shops, transport links and the Conquest Hospital. The accommodation here spans two spacious storeys enjoying a contemporary feel with an OPEN PLAN LIVING SPACE which enjoys GENEROUS PROPORTIONS measuring an impressive 23'2" x 19'0" with a DUAL ASPECT and double doors leading out to the rear garden. The NEWLY FITTED KITCHEN enjoys a front aspect and there is a central island/breakfast bar creating a social space perfect for family life or entertaining. There is also a SEPARATE UTILITY ROOM, a study which could be used as a fifth bedroom and a handy DOWNSTAIRS CLOAKROOM. The first floor houses FOUR DOUBLE BEDROOMS together with a large family bathroom which boasts a stunning FREESTANDING ROLL TOP BATH. Two of the bedrooms enjoy EN-SUITE SHOWER ROOMS and the main bedroom features newly fitted FLOOR TO CEILING WARDROBES. Externally the rear garden offers an expanse of lawn with a storage shed and a large area of patio

GROUND FLOOR



1ST FLOOR



Whilst every attempt has been made to ensure the accuracy of the floorplan contained here, measurements of doors, windows, rooms and any other items are approximate and no responsibility is taken for any error, omission or mis-statement. This plan is for illustrative purposes only and should be used as such by any prospective purchaser. The services, systems and appliances shown have not been tested and no guarantee as to their operability or efficiency can be given.
Made with Metropix ©2023

