



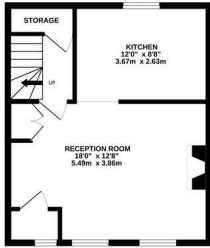
Undercliff Terrace, St. Leonards-On-Sea TN38 0DH

Offers in excess of £650,000

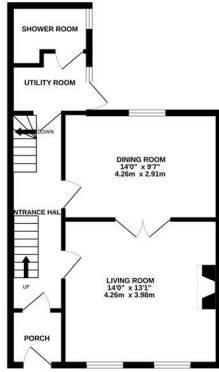


An attractive three bedroom, three reception room TERRACED FAMILY HOME set in an UNRIVALLED LOCATION on Undercliff Terrace, in the HEART OF ST. LEONARDS ON SEA. Occupying an idyllic spot this fantastic property is perfectly placed to enjoy all that the vibrant neighbourhood has to offer and if you fancy venturing further afield the mainline railway station is just a short stroll away and offers connections to London in just over 1 hour and 20 minutes. Spanning FOUR STOREYS, the accommodation here relishes a WEALTH OF ORIGINAL FEATURES including wooden shutters, sash windows and exposed floorboards which flow throughout. Entering through the ground floor, there is a BRIGHT LIVING ROOM sitting to the front of the property with DOUBLE DOORS leading through to the DINING ROOM and there is also a separate utility and shower room on this floor. The MODERN FITTED KITCHEN can be found on the lower ground floor along with a reception room which enjoys a WOOD BURNING STOVE. The three bedrooms span the two upper floors with the main bedroom benefitting from SEA VIEWS, together with a family bathroom where there is a

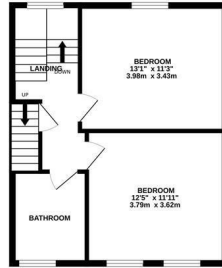
LOWER GROUND FLOOR
377 sq.ft. (35.0 sq.m.) approx.



GROUND FLOOR
495 sq.ft. (45.1 sq.m.) approx.



FIRST FLOOR
443 sq.ft. (41.1 sq.m.) approx.



SECOND FLOOR
212 sq.ft. (19.7 sq.m.) approx.



TOTAL FLOOR AREA: 1517 sq.ft. (140.9 sq.m.) approx.

Whilst every attempt has been made to ensure the accuracy of the floorplan contained here, measurements of doors, windows, rooms and any other items are approximate and no responsibility is taken for any error, omission or mis-statement. This plan is for illustrative purposes only and should be used as such by any prospective purchaser. The services, systems and appliances shown have not been tested and no guarantee as to their operability or efficiency can be given.
Made with Metropix ©2024

