

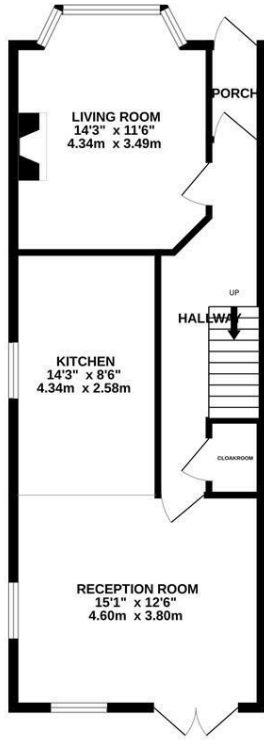
The Ridge, Hastings TN34 2RT

Offers in excess of £400,000

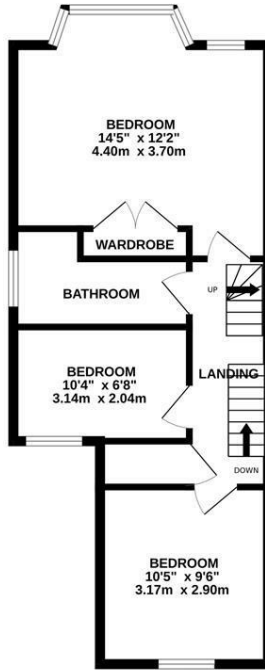


An extremely well presented five bedroom SEMI-DETACHED HOUSE with OFF ROAD PARKING set in a sought after location. It is enviably positioned within easy reach of local shops, good transport links and the Conquest Hospital. The accommodation here spans THREE SPACIOUS STOREYS with an OPEN PLAN LIVING SPACE which enjoys GENEROUS PROPORTIONS, measuring an impressive 15'1" x 12'6" with a DUAL ASPECT and double doors leading out to the rear garden. The MODERN FITTED KITCHEN offers ample storage space and features a sociable BREAKFAST BAR and there is a SECOND RECEPTION ROOM which could be used as a DINING ROOM. The five bedrooms span the two upper floors where the main bedroom benefits from BUILT-IN WARDROBES and the STYLISH FAMILY BATHROOM offers a bath and separate shower enclosure. The rear garden is a particular feature here, there is an area of patio off of the living space followed by a GENEROUS EXPANSE OF LAWN which is bordered with mature shrubs and trees while to the front of the property there is a DRIVEWAY providing off road parking for multiple vehicles.

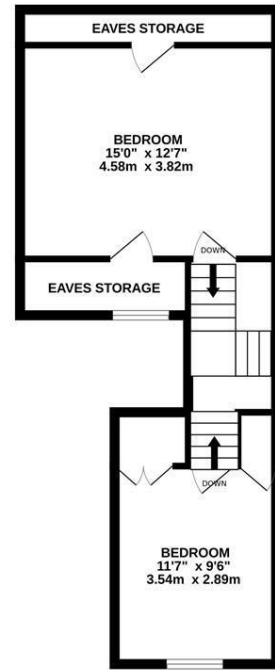
GROUND FLOOR
574 sq.ft. (53.3 sq.m.) approx.



1ST FLOOR
491 sq.ft. (45.6 sq.m.) approx.



2ND FLOOR
438 sq.ft. (40.7 sq.m.) approx.



TOTAL FLOOR AREA: 1503 sq.ft. (139.7 sq.m.) approx.

Whilst every attempt has been made to ensure the accuracy of the floorplan contained here, measurements of doors, windows, rooms and any other items are approximate and no responsibility is taken for any error, omission or mis-statement. This plan is for illustrative purposes only and should be used as such by any prospective purchaser. The services, systems and appliances shown have not been tested and no guarantee as to their operability or efficiency can be given.
Made with Metropix ©2024

