

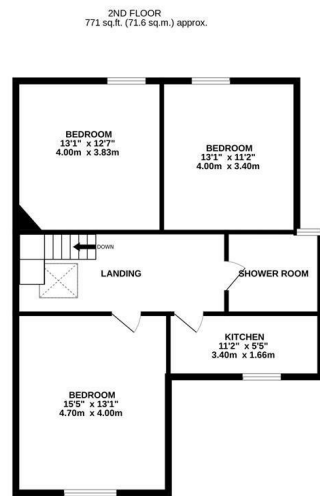
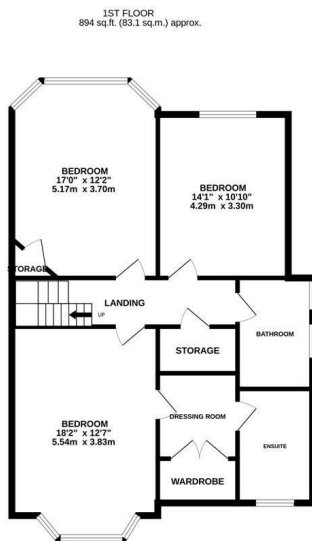
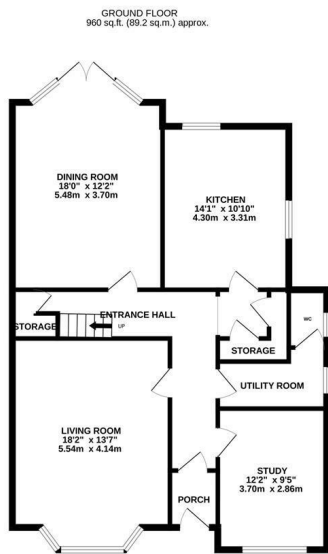


London Road, St. Leonards-On-Sea TN37 6PA

Offers in excess of £625,000



A handsome SIX BEDROOM, DOUBLE-FRONTED, THREE STOREY VICTORIAN HOME set in a central location just a short stroll from Alexandra park, local shops, schools and the hub of St. Leonards On Sea where there are a range of eateries, local shops and a mainline railway station with connections to London. The accommodation here enjoys generous proportions with the ground floor arranged as a BAY FRONTED LIVING ROOM measuring an impressive 18'2 x 13'7 while the FITTED KITCHEN sits at the rear of the property providing ample storage and worktop space. There is a LARGE DINING ROOM which enjoys double doors leading out to the rear garden, an additional study and a SEPARATE UTILITY ROOM with a W/C. The six DOUBLE BEDROOMS span the two upper floors together with THREE BATHROOMS. The first floor houses three of the bedrooms with the main bedroom, currently being used as a reception room and benefitting from a DRESSING ROOM which leads through to an EN SUITE BATHROOM while the further three bedrooms sit on the second floor along with a MODERN KITCHEN and a bathroom creating an ideal space for DUAL ACCOMMODATION.



TOTAL FLOOR AREA : 2625 sq.ft. (243.9 sq.m.) approx.

Whilst every attempt has been made to ensure the accuracy of the floorplan contained here, measurements of doors, windows, rooms and any other items are approximate and no responsibility is taken for any error, omission or mis-statement. This plan is for illustrative purposes only and should be used as such by any prospective purchaser. The services, systems and appliances shown have not been tested and no guarantee as to their operability or efficiency can be given.

Made with Metropix ©2023

