



St. Marys Terrace, Hastings TN34 3LR

Offers in excess of £900,000



An exceptional example of a Victorian house with off road parking for two vehicles and PANORAMIC VIEWS across Hastings towards the English Channel and Beachy Head. Located on the West Hill in one of Hastings MOST SOUGHT AFTER ADDRESSES, known as the Artists Quarter, it's enviably positioned equidistant to Hastings Old Town and Hastings Town centre where there is a mainline railway station with connections to London. The accommodation here spans four spacious storeys and having been totally restored by the seller it is immaculately presented throughout offering a versatile layout and a WEALTH OF ORIGINAL FEATURES including high ceilings and exposed floorboards.

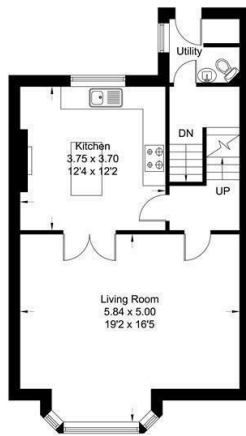
The ground floor currently comprises a SELF-CONTAINED ONE BEDROOM APARTMENT with a large bay fronted living room, small kitchen, bathroom and a private

St Marys Terrace

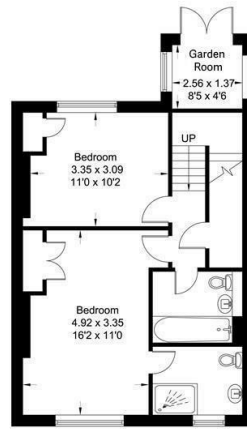
Approximate Gross Internal Area = 186.77 sq m / 2010.37 sq ft



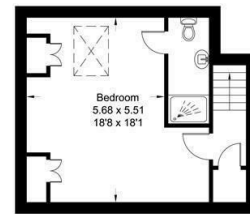
Ground Floor



First Floor



Second Floor



Third Floor

Illustration for identification purpose only, measurements are approximate, not to scale. © 2018

