



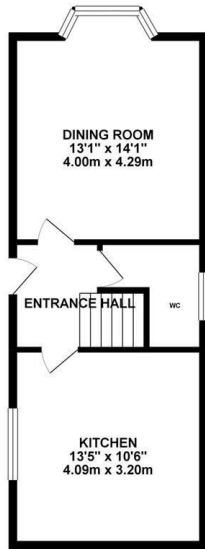
East Parade, Hastings TN34 3AL

Offers in excess of £500,000

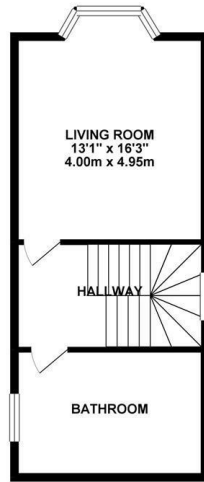


A rarely available DETACHED, FOUR STOREY Grade II Listed seafront home. Set in an unrivalled and prominent within the heart of the historic OLD TOWN this fantastic property is within easy reach of the artisan shops, independent eateries, the Jerwood Gallery and beach. Built in the 1790's the accommodation here is packed full features and PERIOD CHARM, the ground floor is arranged as a BAY FRONTED dining room with a tiled floor, handy cloakroom and a LARGE KITCHEN at the rear. There is a bay fronted LIVING SPACE ON THE FIRST FLOOR where from the front of the property there are BRILLIANT VIEWS across the Stade to Hastings beach and the English Channel. There is also a family bathroom on this level and FOUR DOUBLE BEDROOMS which span the two upper floors. A property of this prominence is a complete rarity and not to be missed.

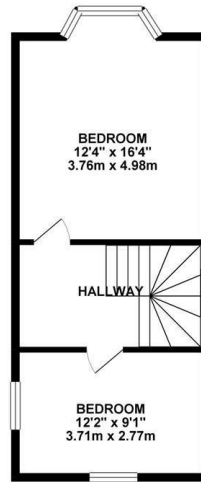
GROUND FLOOR 467.35 sq. ft.
(43.42 sq. m.)



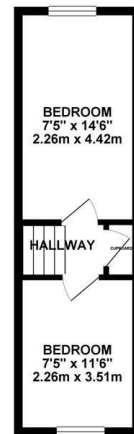
1ST FLOOR 406.35 sq. ft.
(37.75 sq. m.)



2ND FLOOR 406.35 sq. ft.
(37.75 sq. m.)



3RD FLOOR 234.84 sq. ft.
(21.82 sq. m.)



TOTAL FLOOR AREA : 1514.89 sq. ft. (140.74 sq. m.) approx.

Whilst every attempt has been made to ensure the accuracy of the floorplan contained here, measurements of doors, windows, rooms and any other items are approximate and no responsibility is taken for any error, omission or mis-statement. This plan is for illustrative purposes only and should be used as such by any prospective purchaser. The services, systems and appliances shown have not been tested and no guarantee as to their operability or efficiency can be given.
Made with Metropix ©2019

