



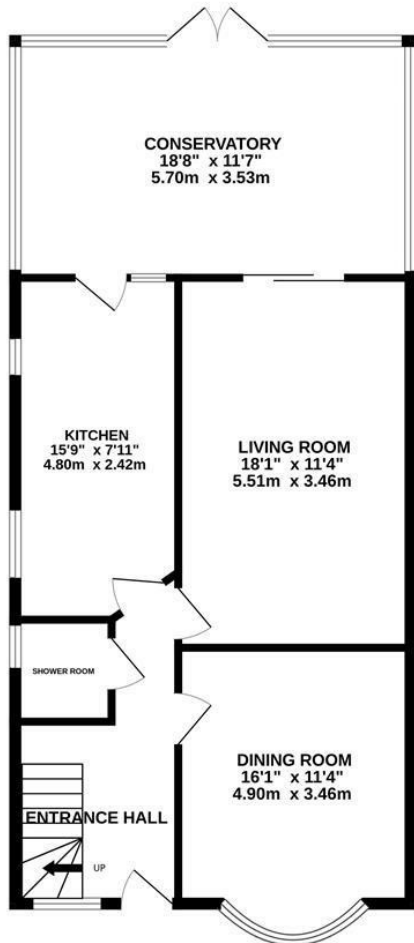
St. Helens Road, Hastings TN34 2NE

Offers in the region of £380,000

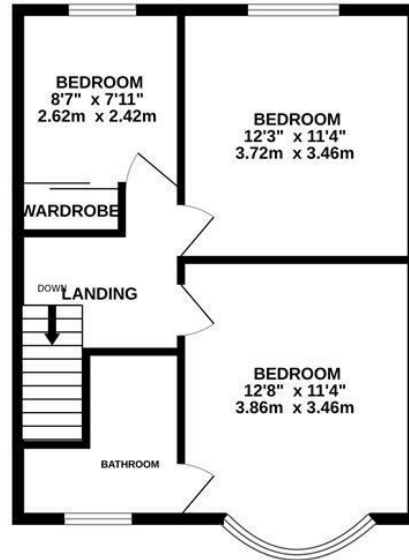


Spacious three bedroom SEMI-DETACHED FAMILY HOME set in a prime location. It's ADJACENT TO ALEXANDRA PARK and within immediate reach of local schools, shops and good transport links. The accommodation here is arranged as a BRIGHT LIVING ROOM which sits to the rear of the property enjoying SLIDING DOORS leading out to the CONSERVATORY offering an additional living space while the SECOND RECEPTION ROOM relishes a BAY FRONTED ASPECT. The FITTED KITCHEN is separate providing ample storage space and there is also a MODERN SHOWER ROOM on this floor. The first floor houses three bedrooms, two of which are generous double rooms with the master bedroom benefitting from an EN-SUITE BATHROOM which features a CORNER BATH. The rear garden is a particular feature here, it offers a GENEROUS EXPANSE OF LAWN bordered with mature shrubs and trees housing a handy storage shed along with an area of patio offering the perfect VERSATILE SPACE. Set in a PRIME LOCATION, this fantastic property would make the PERFECT FAMILY HOME and is not to be missed.

GROUND FLOOR
822 sq.ft. (76.4 sq.m.) approx.



1ST FLOOR
489 sq.ft. (45.4 sq.m.) approx.



TOTAL FLOOR AREA: 1311 sq.ft. (121.8 sq.m.) approx.

Whilst every attempt has been made to ensure the accuracy of the floorplan contained here, measurements of doors, windows, rooms and any other items are approximate and no responsibility is taken for any error, omission or mis-statement. This plan is for illustrative purposes only and should be used as such by any prospective purchaser. The services, systems and appliances shown have not been tested and no guarantee as to their operability or efficiency can be given.
Made with Metropix ©2024

