



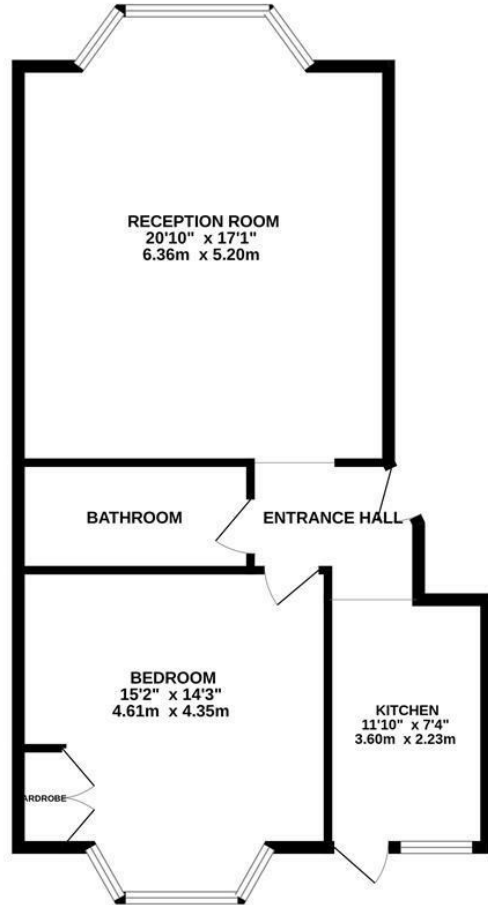
## Anglesea Terrace, St. Leonards-On-Sea TN38 0QS

Offers in excess of £300,000



Exquisite ONE BEDROOM GARDEN APARTMENT set on the GROUND FLOOR of this attractive residence in a LEAFY ST LEONARDS street, adjacent to Gensing Gardens. It's ideally located just a short stroll into the hub of St. Leonards where there is a mainline railway station, local shops and award winning eateries making it perfectly placed for LIFE BY THE SEA. The generous accommodation here is BEAUTIFULLY PRESENTED throughout and enjoys a WEALTH OF PERIOD FEATURES including wooden floorboards and original sash windows. The GRAND LIVING ROOM relishes a feature fireplace and a full height bay window framing the BEAUTIFUL OUTLOOK across Gensing Gardens while the separate kitchen sits at the rear of the property offering access out to the rear garden. The impressive bedroom measures 15'2 x 14'3 and features a BUILT IN WARDROBE together with a STYLISH BATHROOM where there is a bath with shower and screen over. The rear garden offers a raised area of decking off of the kitchen making this the perfect spot to DINE AL-FRESCO followed by an expanse of lawn housing a fully insulated GARDEN STUDIO fitted with

GROUND FLOOR  
712 sq.ft. (66.2 sq.m.) approx.



TOTAL FLOOR AREA: 712 sq.ft. (66.2 sq.m.) approx.

Whilst every attempt has been made to ensure the accuracy of the floorplan contained here, measurements of doors, windows, rooms and any other items are approximate and no responsibility is taken for any error, omission or mis-statement. This plan is for illustrative purposes only and should be used as such by any prospective purchaser. The services, systems and appliances shown have not been tested and no guarantee as to their operability or efficiency can be given.  
Made with Metreplex ©2024

