

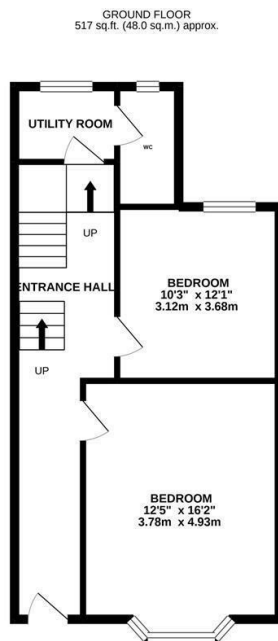
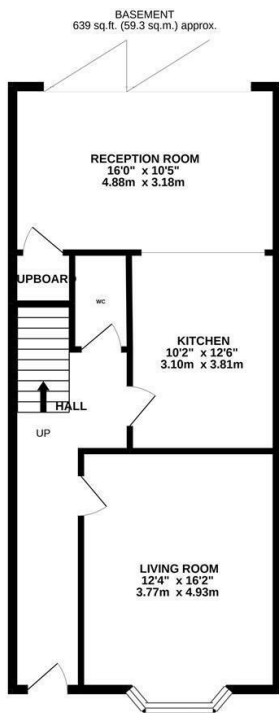


Tower Road, St. Leonards-On-Sea TN37 6JE

Offers in excess of £435,000



Simply stunning three storey, FIVE BEDROOM HOUSE set close to Alexandra Park, local shops and central St. Leonards where there is a mainline railway station, award winning eateries and galleries. The accommodation here is PRESENTED TO AN EXCEPTIONAL STANDARD with LUXURY FITTINGS and provides a versatile layout. On the lower level there is a BAY FRONTED LIVING ROOM which enjoys a front aspect while the OPEN PLAN KITCHEN AND DINING SPACE sit at the rear with BI-FOLDING DOORS opening on to the rear garden. The CONTEMPORARY KITCHEN units feature contrasts stone worktops and integrated appliances offering ample storage space. There is also a handy downstairs cloakroom on this floor. On the entrance level there are two double bedrooms with one currently being used as a second reception room along with a UTILITY ROOM and cloakroom. The upper floor houses a further three bedrooms and a STYLISH FAMILY BATHROOM where there is a panelled bath and a separate shower enclosure. Set in a central location this fantastic property would make the PERFECT FAMILY HOME and is not to be missed.



TOTAL FLOOR AREA: 1659 sq.ft. (154.2 sq.m.) approx.

Whilst every attempt has been made to ensure the accuracy of the floorplan contained here, measurements of doors, windows, rooms and any other items are approximate and no responsibility is taken for any error, omission or mis-statement. This plan is for illustrative purposes only and should be used as such by any prospective purchaser. The services, systems and appliances shown have not been tested and no guarantee as to their operability or efficiency can be given.
Made with Metropix ©2021

