



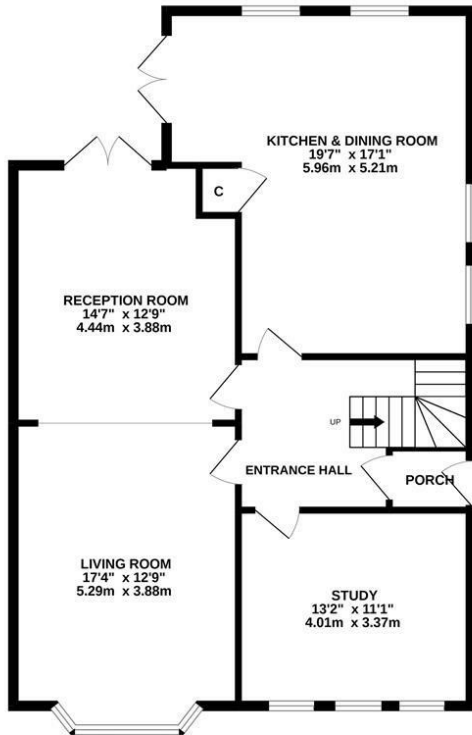
Lower Park Road, Hastings TN34 2LD

Offers in excess of £800,000

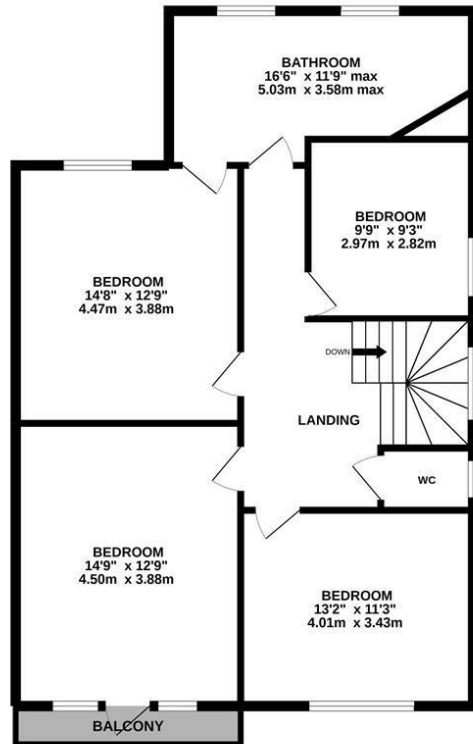


Simply stunning four bedroom, semi detached EDWARDIAN HOME set in an unrivalled location adjacent to and with STUNNING VIEWS of Alexandra Park. This substantial home is enviably placed within walking distance of the Old Town, Hastings Town Centre where there is a mainline railway station and the beach. Spanning two storeys the accommodation here is presented to an exceptional standard throughout enjoying GRAND PROPORTIONS and a wealth of original features. The ground floor is accessed via an enclosed porch with original tiling which leads to the impressive entrance hall. There is a bay fronted living room with a WOOD BURNING STOVE which is open to an additional reception room, creating a charming DUAL ASPECT SPACE with double doors leading out to the rear garden. The STYLISH EAT-IN KITCHEN sits at the rear of the property and features an island, plenty of space for a dining table and access out to the garden. Sitting behind the kitchen is a handy utility room which is accessed externally. There is also a study providing the perfect space for those needing a home office or a ground floor bedroom. The first floor

GROUND FLOOR
952 sq.ft. (88.4 sq.m.) approx.



1ST FLOOR
942 sq.ft. (87.5 sq.m.) approx.



TOTAL FLOOR AREA: 1894 sq.ft. (175.9 sq.m.) approx.

Whilst every attempt has been made to ensure the accuracy of the floorplan contained here, measurements of doors, windows, rooms and any other items are approximate and no responsibility is taken for any error, omission or mis-statement. This plan is for illustrative purposes only and should be used as such by any prospective purchaser. The services, systems and appliances shown have not been tested and no guarantee as to their operability or efficiency can be given.

Made with Metropix ©2022

