



## Park Court, Farnham GU9 7TB

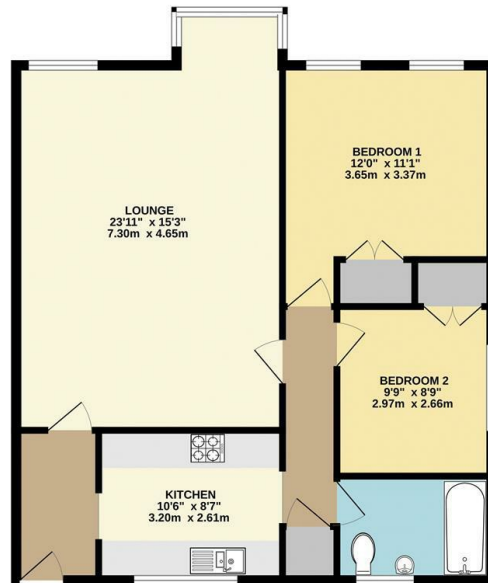
- Ground Floor Apartment
- Kitchen with White Goods
  - Two Bedrooms
- Off Road Parking
- EPC Rating C
- Walking distance to town and station
  - Large Living/Dining Room
  - Gas Central Heating
- Available early June 2025
  - Council Tax Band C

£1,350 Per Calendar Month



Local Authority **Waverley**  
**Borough Council**  
Council Tax Band **C**  
EPC Rating **C**

GROUND FLOOR  
822 sq.ft. (76.3 sq.m.) approx.



TOTAL FLOOR AREA : 822 sq.ft. (76.3 sq.m.) approx.  
Whilst every effort has been made to ensure the accuracy of the figures contained here, measurements of doors, windows, rooms and any other items are approximate and no responsibility is taken for any error, omission or misstatement. This plan is for guidance purposes only and should be used as such by any prospective purchaser. The services, systems and appliances shown have not been tested and no guarantee as to their operation or efficiency can be given.  
Made with Lettingmap 10007

**Greenwood & Co Office**  
The Wool House, Bear Lane, Farnham,  
Surrey, GU9 7LG

**Contact**  
01252734734  
info@greenwood-  
property.co.uk

Agents Note: Whilst every care has been taken to prepare these particulars, they are for guidance purposes only. All measurements are approximate and for general guidance purposes only and whilst every care has been taken to ensure accuracy, they should not be relied upon and potential buyers/tenants are advised to recheck the measurements.

