



Endeavour Way

Hythe Marina Village, Hythe, SO45 6DX

- End Terraced Marina House
- Large Living Room with Balcony
- Spacious Kitchen / Dining Room with Integral Appliances
- Newly Fitted Bathrooms

Asking Price Of £665,000

EPC Rating '73 C'





Property Description

ENTRANCE HALL

Welcoming you into the property is a small entrance hall with plush carpets, stairs down to kitchen and dining room and up to living room and bedrooms.

Side access to garage.

Double glazed obscured glass front door and full length double glazed obscure glass window.

KITCHEN/DINER

Kitchen comprising of wall and base level storage units, blue counter tops with a single and a half stainless steel drainer sink with chrome mixer tap with rear aspect double glazed windows and above and tiled surrounds. Integrated appliances include a Neff five point gas burner stove with



Neff extractor hood overhead, John Lewis dual oven and grill and Hotpoint fridge/freezer. The kitchen also benefits from a Bosch dishwasher, Bosch washing machine and Bosch tumble dryer. A centre island/breakfast bar also features the same worksurface and base level storage, truly utilising the space.

The dining area is very bright and open with rear aspect double glazed French doors leading to your own enclosed rear patio.

Both rooms featuring a Mediterranean style blue tiled floor.

BATHROOM

Modern three piece family bathroom comprising of a built-in white ceramic basin with chrome mixer tap, white ceramic WC with concealed cistern and push button flush, a white enamel bath with shower overhead, chrome fittings and glass shower screen.

Tiled flooring and walls, counter space with storage beneath, heated towel rail and extractor fan.

LIVING ROOM

Large and open living room comprising of laminate timber flooring, rear aspect double glazed windows and French doors to your own private balcony. Live gas fire and built-in bar area with undercounter fridge.

MASTER BEDROOM

Large top floor master bedroom comprising of laminate timber flooring, built in wardrobes and large desk unit, two Velux windows and en-suite.

ENSUITE

Spacious four piece en-suite comprising of a corner cubicle shower, built-in white ceramic basin with chrome mixer tap and storage underneath, counter space, white ceramic WC with concealed cistern and push button flush and white enamel bath.

The bathroom has feature wooden beams running across the ceiling, two Velux windows and tiled flooring.



BEDROOM TWO

Double bedroom with plush carpet, built-in wardrobes, shelving unit and two Velux windows.

GARAGE

Spacious internal garage with fresh water tap and storage area which can be knocked through to increase garage space or alternatively turned into a utility.

PATIO

Private rear patio, the perfect little sun trap to enjoy the Marina views. Access down to your own 13m mooring which is wide set to potentially allow for up to two smaller scale boats. The patio also benefits from a fresh water tap.

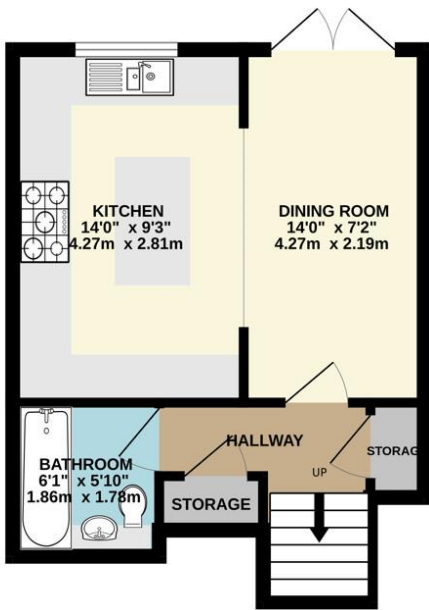
ADDITIONAL INFO

Exterior has been recently re-painted
Balcony has been re-decked with hardwood and had a new railing fitted.
Valliant Eco Tech Boiler
Council Tax Band: G

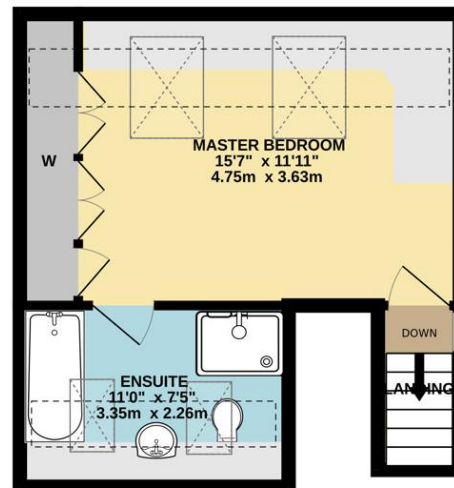
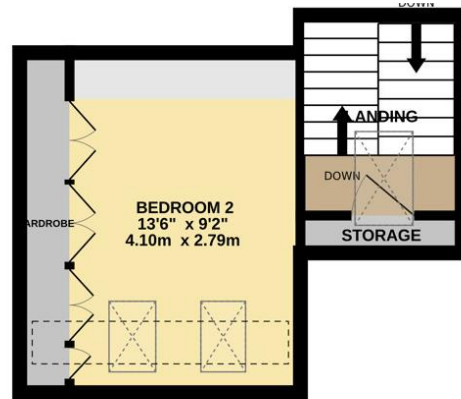
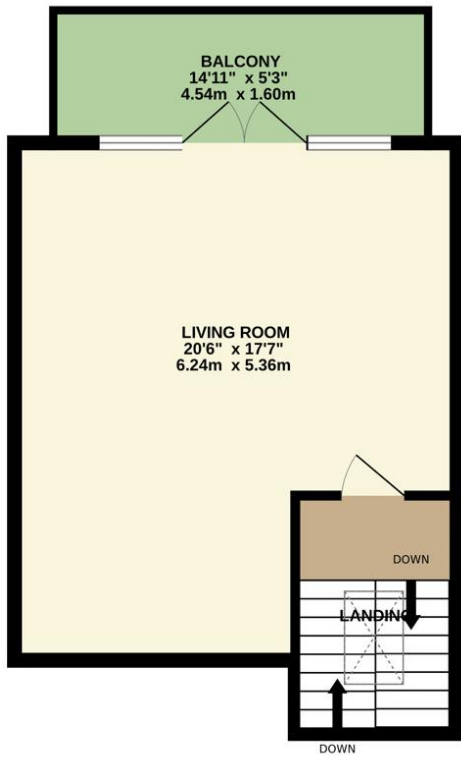
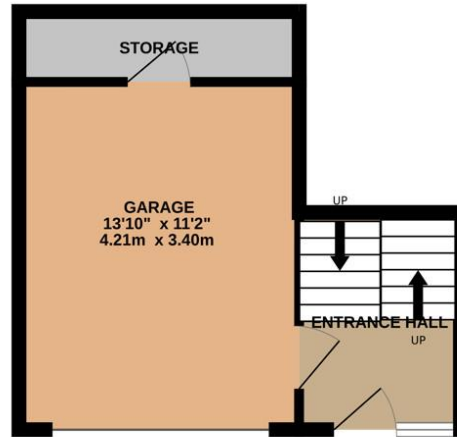




Score	Energy rating	Current	Potential
92+	A		
81-91	B		82 B
69-80	C	73 C	
55-68	D		
39-54	E		
21-38	F		
1-20	G		



Entry Level



Hotspur House
Prospect Place
Hythe
Southampton
Hamshire

www.hytheandwaterside.com
sales@hytheandwaterside.com
0238 0845 434

Agents Note: Whilst every care has been taken to prepare these sales particulars, they are for guidance purposes only. All measurements are approximate and for general guidance purposes only and whilst every care has been taken to ensure their accuracy, they should not be relied upon and potential buyers are advised to recheck the measurements

