



## Waterside

Hythe, Southampton

Asking Price Of £150,000



- Top Floor Flat
- One Double Bedroom & Open Plan Living
- Ideal home or possible Investment opportunity
- Short walk to Hythe shops and waterfront

**EPC Rating**

E



## Property Description

### KITCHEN 7' 11" x 7' 4" (2.41m x 2.24m)

A well fitted open plan kitchen with built in oven, hob and extractor. There is a range of floor and wall units, with tiled splashbacks, and a stainless steel sink and drainer. There is space and plumbing for a washing machine and space for a fridge. The kitchen area floor is tiled for easy cleaning, and helps distinguish the area from the rest of the open plan living space.

### LOUNGE AREA 11' 9" x 10' 6" (3.58m x 3.2m)

The lounge area is carpeted with large window letting in lots of light.

### DINING AREA 8' 3" x 7' 11" (2.51m x 2.41m)

Adjacent to the kitchen, the small dining area is part of the open plan layout.

### BEDROOM 10' 3" x 9' 8" (3.12m x 2.95m)

Accessed from a lobby off the living area, the spacious double bedroom has a useful built in wardrobe. There is a window, and electric storage heater.





#### SHOWER ROOM 6' 6" x 5' 2" (1.98m x 1.57m)

The shower room has a white suite with W.C and hand wash basin, and a walk in shower cubicle with Triton shower. There is a window allowing natural light. The room has fully tiled walls and floor and there is also a loft hatch.

#### GARAGE

There is a garage in a block with up and over door.

#### COMMUNAL GARDENS

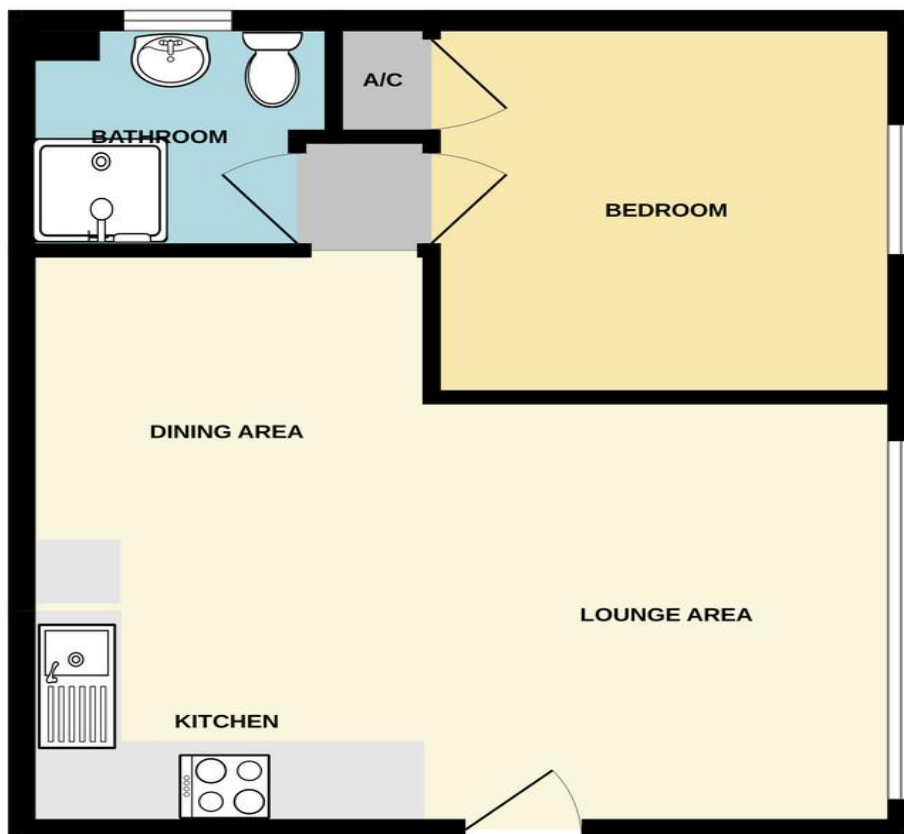
The communal garden is laid mainly to lawn with mature shrubs and trees.



#### PROPERTY INFORMATION

This top floor 1 bedroom apartment is just a short walk to central Hythe and to the popular waterfront with views of Southampton water. It has open plan living and 1 double bedroom. It benefits from communal gardens and there are lovely parks close by. It would make an ideal home for a first time buyer, or alternatively could make a great investment opportunity. The current tenant is on a month to month contract so the property could be available with vacant possession and NO FORWARD CHAIN at short notice.

## GROUND FLOOR



Whilst every attempt has been made to ensure the accuracy of the floorplan contained here, measurements of doors, windows, rooms and any other items are approximate and no responsibility is taken for any error, omission or mis-statement. This plan is for illustrative purposes only and should be used as such by any prospective purchaser. The services, systems and appliances shown have not been tested and no guarantee as to their operability or efficiency can be given.  
Made with Metropix ©2023

Hotspur House  
Prospect Place  
Hythe  
Southampton  
Hampshire  
SO45 6AU

[www.hytheandwaterside.com](http://www.hytheandwaterside.com)  
[darren@hytheandwaterside.com](mailto:darren@hytheandwaterside.com)  
0238 0845 434

Agents Note: Whilst every care has been taken to prepare these sales particulars, they are for guidance purposes only. All measurements are approximate are for general guidance purposes only and whilst every care has been taken to ensure their accuracy, they should not be relied upon and potential buyers are advised to recheck the measurements