



Flat 27, Turner House, St. Margarets Way, Midhurst, GU29 9FU

Offers in the Region of £275,000





Flat 27 Turner House, Midhurst

Leasehold 115yrs / Service Charge: £400pm / Council Band: C

Located within Turner House, a Retirement Living development by McCarthy & Stone, **27 Turner House** presents a superb opportunity to enjoy independent living with the reassurance of tailored support services. Exclusively for the over 60s, Turner House is purpose-built to offer security, comfort and a vibrant community atmosphere in the charming market town of Midhurst.

Residents benefit from the presence of a dedicated Concierge during office hours and a comprehensive array of security features, including a 24-hour emergency call system and a camera door entry system linked directly to your TV, allowing you to see who's at the door before granting access. A fully inclusive service charge covers the maintenance of communal areas, buildings insurance, gardening and landscaping, external window cleaning, water rates, and energy costs for the residents' lounge and shared facilities – ensuring a low-maintenance lifestyle.

Accommodation Overview

Entrance Hall:

A spacious entrance hallway welcomes you into the apartment, featuring a walk-in storage/airing cupboard and an intercom door entry system with emergency pull cord. Illuminated light switches and a smoke detector provide additional peace of mind.

Living Room:

The generously sized lounge is flooded with natural light from floor-to-ceiling double-glazed windows. It offers ample space for both dining and relaxation, with TV and Sky/Sky+ points, fitted carpets, raised electric sockets, and ceiling lighting. Partially glazed doors lead to the kitchen.

Kitchen:

The fully fitted contemporary kitchen includes tiled flooring, a stainless steel sink with lever tap, integrated appliances such as an oven, ceramic hob with extractor hood, fridge/freezer, and under-pelmet lighting for a modern finish.

Bedroom One with En-Suite:

A spacious double bedroom with a large walk-in wardrobe and underfloor



Flat 27 Turner House, Midhurst

Kitchen:

The fully fitted contemporary kitchen includes tiled flooring, a stainless steel sink with lever tap, integrated appliances such as an oven, ceramic hob with extractor hood, fridge/freezer, and under-pelmet lighting for a modern finish.

Bedroom One with En-Suite:

A spacious double bedroom with a large walk-in wardrobe and underfloor heating. TV and BT points are provided, along with convenient raised power sockets. The en-suite shower room features a level-access walk-in shower, grab rails, underfloor heating, WC, vanity unit with mirror and lighting, and an emergency pull cord.

Bedroom Two:

A well-proportioned second double bedroom with underfloor heating and raised power points, ideal for guests or use as a study or hobby room.

Main Bathroom:

Fully tiled and fitted with a walk in shower, grab rails, WC, and a stylish vanity unit with integrated basin and mirror. Underfloor heating ensures year-round comfort.

Tenure:

Leasehold – 125 years from 2015

Ground Rent: £495 per annum (review due January 2030)

Parking:

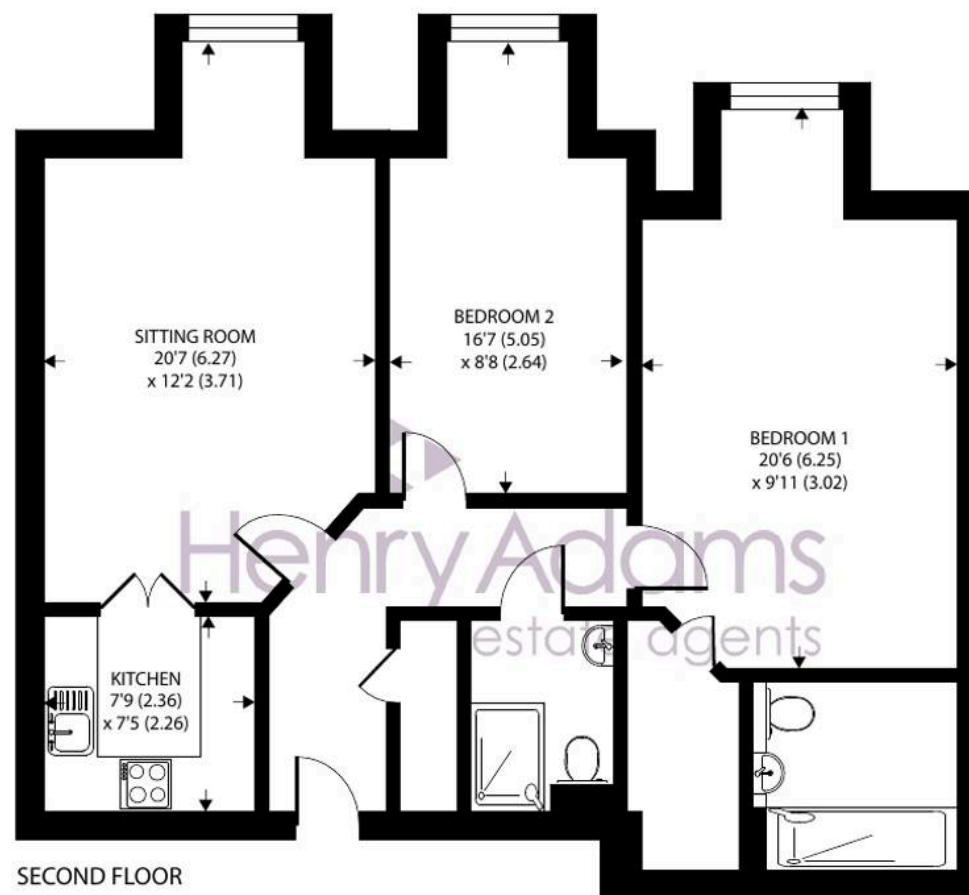
Allocated parking available via permit scheme, subject to availability.

Annual fee typically £250.

Location:

Turner House is situated in Midhurst, a picturesque West Sussex town known for its historic architecture, vibrant community and proximity to natural beauty.





St. Margarets Way, Midhurst, GU29

Approximate Area = 859 sq ft / 79.8 sq m

For identification only - Not to scale



Floor plan produced in accordance with RICS Property Measurement 2nd Edition, Incorporating International Property Measurement Standards (IPMS2 Residential). © nichecom 2025. Produced for Henry Adams. REF: 1301768





Henry Adams – Midhurst

Henry Adams, Bepton Court, 2 West Street – GU29 9NF

01730 817370 • midhurst@henryadams.co.uk • www.henryadams.co.uk/

Agents Note – Our particulars are for guidance only and are intended to give a fair overall summary of the property. They do not form part of any contract or offer, and should not be relied upon as a statement or representation of fact. Measurements, areas and distances are approximate only. Photographs may include lifestyle shots and pictures of local views.