



White House, Tillington, Petworth, West Sussex, GU28 0PG

Offers in the Region of £750,000





White House, Tillington

A detached period home offering character and charm in a rural setting with views of The South Downs

- No Onward Chain
- Detached Character Cottage
- Versatile Accommodation with Potential
- Mature Wraparound Garden
- Views of The South Downs
- Three Bedrooms / Two Bathrooms
- Private Rural Location

LOCATION AND AMENITIES

The White House is located in a splendid rural setting just to the west of the village of Tillington with its historic Horseguards public house and All Hallows Church with its origins dating back to the 12th century. Petworth is about 2 miles to the east and provides all the basic shopping needs as does Midhurst (about 4 miles to the west) and also includes Cowdray Park Golf Club, Polo lawns and a health club at the Spread Eagle Hotel. Goodwood (about 8 miles) has horseracing, motor racing and the hugely popular Festival of Speed and Revival. The cathedral city of Chichester (about 15 miles) with its renowned Festival Theatre has further shopping facilities with a good selection of high street shops and supermarkets. Mainline stations can be found at Haslemere (about 11 miles) and Pulborough (about 8 miles) both providing services to London and the south coast. The A3 can be accessed via Milford in under half an hour.

SERVICES

Mains water and electricity. Private drainage. Oil fired central heating.

White House, Tillington, Petworth

Dating back to 1808, The White House is a charming period country cottage enjoying a peaceful rural location, backing directly onto open farmland. Boasting a wealth of character, the property features attractive external elevations, including painted render, exposed stonework, and half tile hanging beneath a traditional clay tiled roof.

Internally, the cottage offers generously proportioned accommodation with scope for further enhancement. Rich in period features, the interior includes exposed beams, open fireplaces, wooden flooring, and cottage-style doors. The ground floor comprises a spacious, south/west-facing sitting room with a working fireplace, a delightful dining room with feature fireplace that opens into a country-style kitchen, a light-filled south-facing sun room with sliding doors to the garden, a cosy family room, and a convenient cloakroom.

Upstairs, the principal bedroom benefits from an ensuite bathroom and a walk-in cupboard. There are two further bedrooms, one of which includes a versatile dressing room or nursery, along with a family bathroom.

The gardens are a particular feature of the property, predominantly facing south and bordered by mature hedging and trees, ensuring privacy. The grounds, extending to approximately 0.23 of an acre, include a tarmac and gravel driveway offering ample parking, a neatly maintained lawn, a paved patio area, and well-stocked borders. A hardstanding area provides access to a garden shed, ideal for storage.

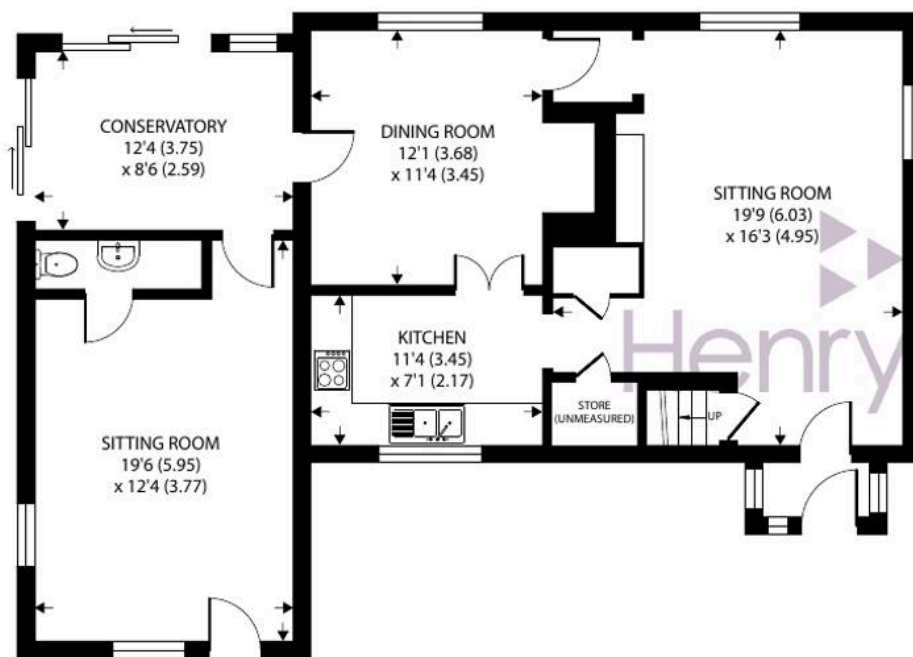
The White House presents a rare opportunity to acquire a picturesque period home in a stunning countryside setting with great potential.







Denotes restricted
head height



GROUND FLOOR



FIRST FLOOR

White House, Tillington

Approximate Area = 1654 sq ft / 153.6 sq m

Limited Use Area(s) = 107 sq ft / 9.9 sq m

Total = 1761 sq ft / 163.5 sq m

For identification only - Not to scale



Floor plan produced in accordance with RICS Property Measurement 2nd Edition,
Incorporating International Property Measurement Standards (IPMS2 Residential). © n1checom 2025.
Produced for Henry Adams. REF: 1277763





Henry Adams – Midhurst

Henry Adams, Bepton Court, 2 West Street – GU29 9NF

01730 817370 • midhurst@henryadams.co.uk • www.henryadams.co.uk/

Agents Note – Our particulars are for guidance only and are intended to give a fair overall summary of the property. They do not form part of any contract or offer, and should not be relied upon as a statement or representation of fact. Measurements, areas and distances are approximate only. Photographs may include lifestyle shots and pictures of local views.