





106 King Edward VII Apartments, Kings Drive, Midhurst, GU29

Positioned in one of the most enviable spots on the King Edward VII Estate is this stunning three bedroom, three bathroom apartment

 2  3  3  N/A

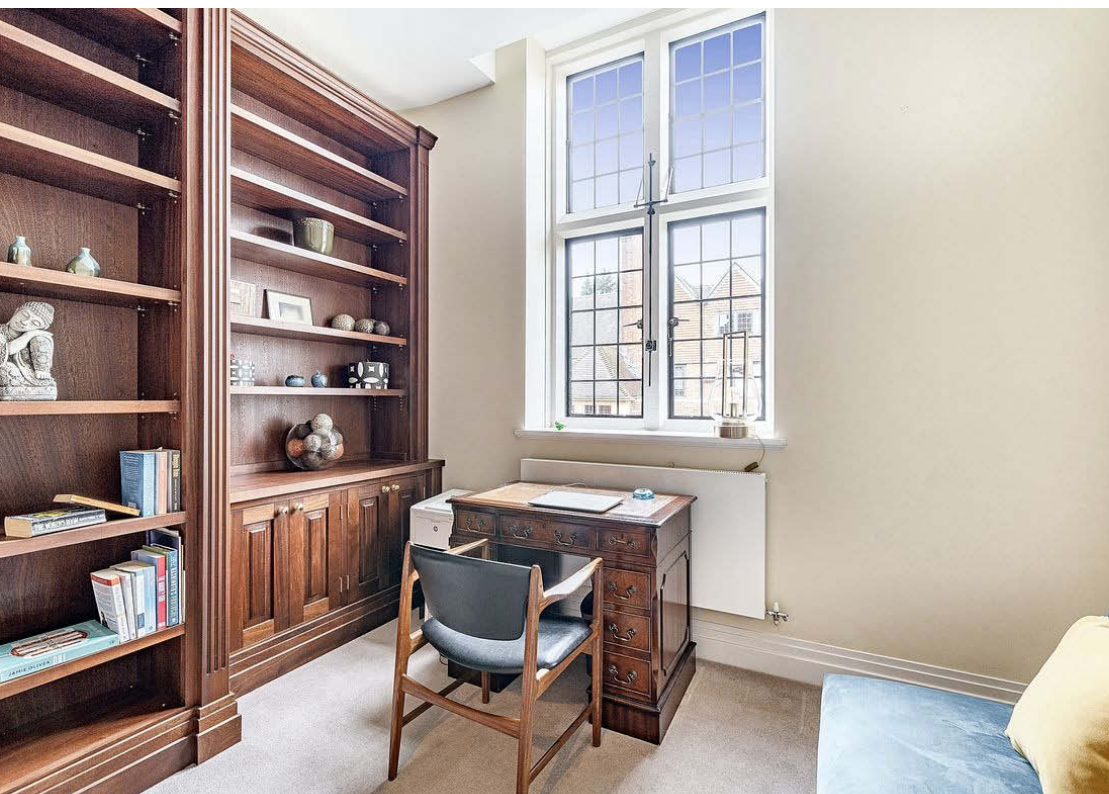
- ▶ No Onward Chain
- ▶ Three Ensuites
- ▶ Large South-Facing Balcony
- ▶ Three Double Bedrooms
- ▶ Two Secure Parking Spaces
- ▶ Stunning Views
- ▶ On-Site Facilities
- ▶ High Specification
- ▶ Prestigious Development
- ▶ 'Jewell Of The Crown' Apartment

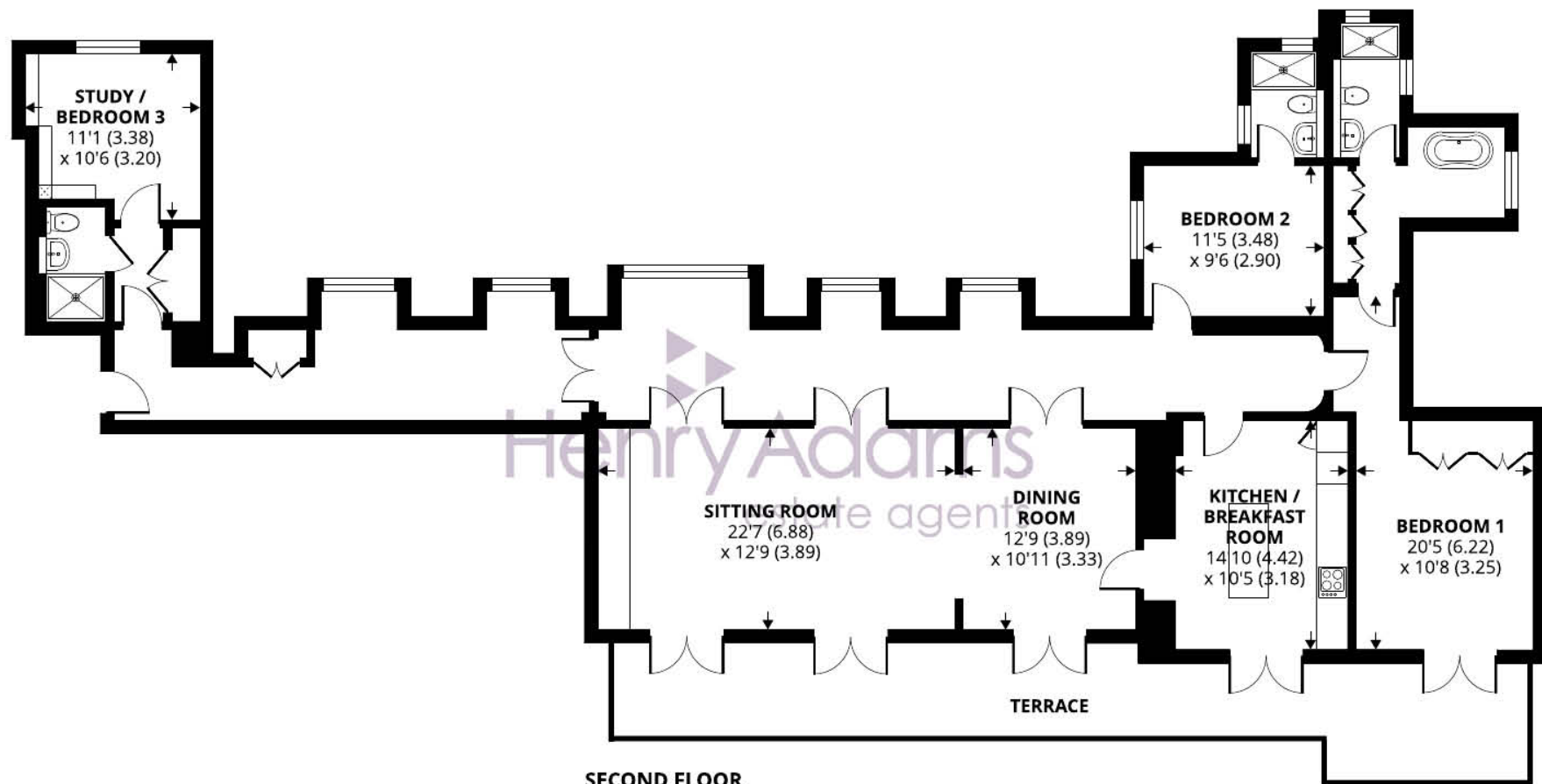
No. 106 occupies a prime position within the prestigious King Edward VII Estate, renowned for its heritage and grandeur. Featured in the video "George Clarke Returns to King Edward VII Estate," this apartment was aptly described as 'The Jewel in the Crown,' offering a rare opportunity to own a piece of architectural history. Spanning an impressive 1,800 sq. ft., this dual-aspect apartment effortlessly blends classic charm with contemporary luxury.

As you step into the elegant entrance hall, the restored parquet flooring immediately captures your attention, running the length of the apartment and adding to the sense of grandeur. High ceilings, large character windows, and a high-specification finish throughout create an atmosphere of refinement and sophistication. The 33-ft open-plan living area is a highlight, flooded with natural light and offering ample space for relaxation and entertaining. Tastefully added bespoke storage units enhance both style and practicality, ensuring the character of the original restoration is beautifully retained. Three sets of double doors lead to a south-facing terrace, a perfect spot to unwind while enjoying stunning views of the iconic Gertrude Jekyll gardens and the rolling countryside extending to the South Downs. The self-contained kitchen features a central island with a breakfast bar, granite countertops, and high-end fitted appliances. Direct access to the terrace allows for the perfect morning coffee with a view.









106 King Edward VII Apartments, Kings Drive, Midhurst, GU29 0EY

Approximate Area = 1801 sq ft / 167.3 sq m

For identification only - Not to scale



Floor plan produced in accordance with RICS Property Measurement Standards incorporating International Property Measurement Standards (IPMS2 Residential). © n|checon 2024. Produced for Henry Adams. REF: 1180824

Agents Note - Our particulars are for guidance only and are intended to give a fair overall summary of the property. They do not form part of any contract or offer, and should not be relied upon as a statement or representation of fact. Measurements, areas and distances are approximate only. Photographs may include lifestyle shots and pictures of local views. No undertaking is given as to the structural condition of the property, or any necessary consents or the operating ability or efficiency of any service, system or appliance. Please ask if you would like further information, especially before you travel to the property.

All three double bedrooms come with their own luxury ensuite bathrooms, offering flexible accommodation to suit various needs. The principal suite boasts custom-built wardrobes, a separate bathing area, and direct access to the outdoor space. Bedroom three has been thoughtfully redesigned as a home office, with bespoke floor-to-ceiling units.

Additional features include a private storage unit in the central basement, two allocated underground parking spaces, including an electric car charging point, making this property as practical as it is stunning.

King Edward VII Estate

Built in 1901 and designed to be a tuberculosis hospital, the King Edward VII Sanatorium was officially opened by His Majesty King Edward VII on 6th June 1906, and heralded as one of the three finest hospital buildings of its time. Since then, through expert restoration, the vision has been to create a new and vibrant destination in the centre of a glorious location.

Located in the heart of the spectacular South Downs National Park, the King Edward VII estate offers contemporary luxury living within the timeless landscape of an Area of Outstanding Natural Beauty. This stunning Grade II listed building has been superbly restored to provide elegant spaces to relax and socialise in. Onsite facilities include a gym, swimming pool, full usage of the communal former ladies reading room and former nurses dining hall, 165 acres of private woodland walks and the availability of a guest suite should you need it. The Estate's friendly concierge is also on hand to ensure you feel perfectly at home; he can accept deliveries and offer helpful advice on local activities, among other things.

