



4 Regency House, St Margarets Way, Midhurst, GU29 9FW

A stunning first floor, three bedroom apartment located in the heart of Midhurst with access to everyday essentials on your doorstep.

 1  3  2  N/A

- ▶ No Onward Chain
- ▶ Share Of The Freehold
- ▶ Two Bedrooms (One Ensuite)
- ▶ Open Plan Living Space
- ▶ Integrated Appliances
- ▶ South Facing Communal Gardens
- ▶ Three Bedrooms
- ▶ Walking Distance To Town
- ▶ Two Allocated Parking Spaces
- ▶ Restored Period Features

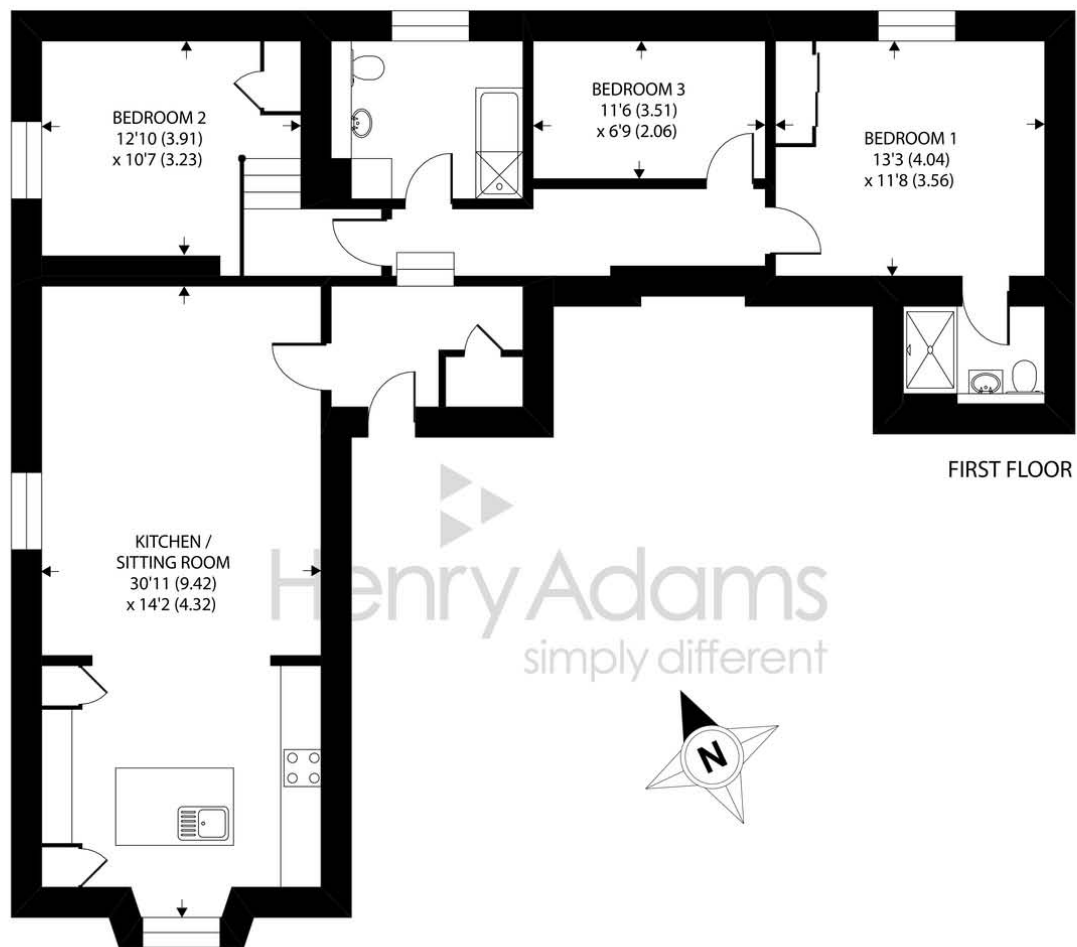
Dating back to the early 19th Century, The Regency Villa formed part of St Margaret's Convent, a school founded by the Sisters of Mercy in 1888. The Villa was designated a Grade II Listed building in 2010 and has been sympathetically refurbished and converted into four, three bedroom apartments.

Located in the heart of The Montagues, Regency House is surrounded by beautifully landscaped communal gardens creating a tranquil environment to be enjoyed by its residents. The generous entrance hall has an electronic entry system and retains many of its original period features which have been expertly renovated throughout this stunning refurbishment.

Accessed via a sweeping staircase to the first floor, apartment 4 boasts 1,110 sq ft of accommodation which includes a spacious open plan kitchen/living/dining room complete with modern integrated appliances, ample storage and views over the gardens. There are three well proportioned bedrooms; The principal suite has its own en-suite shower room and the two further bedrooms have access to a large, tiled family bathroom with bath and overhead shower. The addition of bespoke units have been incorporated into bedroom three creating the perfect home office/study. This apartment also comes with the added convenience of two allocated parking spaces found to the rear and the benefit of a share of the freehold.

Everything that Midhurst has to offer is on your doorstep including quaint independently owned shops, a number of leisure options and miles of glorious countryside to explore.





Flat 4, Regency House, St. Margarets Way, Midhurst, GU29 9FW

Approximate Area = 1111 sq ft / 103.2 sq m

For identification only - Not to scale



Floor plan produced in accordance with RICS Property Measurement Standards incorporating International Property Measurement Standards (IPMS2 Residential). © nichecom 2021. Produced for Henry Adams. REF: 693206

Agents Note - Our particulars are for guidance only and are intended to give a fair overall summary of the property. They do not form part of any contract or offer, and should not be relied upon as a statement or representation of fact. Measurements, areas and distances are approximate only. Photographs may include lifestyle shots and pictures of local views. No undertaking is given as to the structural condition of the property, or any necessary consents or the operating ability or efficiency of any service, system or appliance. Please ask if you would like further information, especially before you travel to the property.

Location and Amenities

The thriving town of Midhurst resides on the Surrey and Sussex border. Full of listed buildings, attractive shops and narrow lanes, it's also blessed with charming hotels and restaurants. There are also primary schools, an Academy College, leisure complex, medical centre, a library, Sainsburys and the Cowdray Park golf course. The town has previously been declared as one of the best places to live in the South East by a Sunday Times survey which was based on a number of criteria including lifestyle, crime rate, schooling and house prices.

Discover more extensive havens of choice in nearby Haslemere and Chichester, while neighbouring Petworth has a variety of shops and National Trust parkland. There are plenty of leisure pursuits from walking, cycling and horse riding in the National Park, to shooting and fishing in the historic Cowdray Park. Sailors and theatre-goers will love Chichester and for racing enthusiasts, glorious Goodwood is within a short drive too.

For more information on the town log on to the visitmidhurst.com website.

