



8 Bepton Road, Midhurst, West Sussex, GU29 9LU

A charming three bedroom semi-detached home benefiting from character features and a south facing walled garden.



- ▶ **Town Centre Location**
- ▶ **Three Double Bedrooms**
- ▶ **In Need Of Updating**
- ▶ **Spacious Accommodation**
- ▶ **Character Features**
- ▶ **South Facing Walled Garden**
- ▶ **Versatile Layout**
- ▶ **Nearby Amenities**

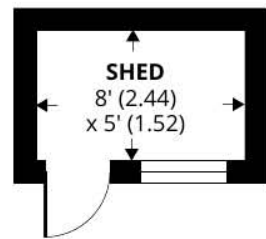
Nestled in the heart of Midhurst town centre, this charming three-bedroom semi-detached property exudes character with its tile-hung elevations and single-glazed wooden framed windows, all under a classic clay tiled roof. While the interior requires updating, the home's spacious layout and delightful flow present an excellent canvas for creating your dream home.

The ground floor boasts a large sitting room featuring an inviting open fireplace, perfect for cozy evenings. The well-fitted kitchen is equipped with a Rangemaster cooker, offering a functional and stylish space for culinary endeavors. Adjacent to the kitchen, the separate dining room, which can also serve as a study, provides versatility and direct access to the garden via a charming stable door. A convenient cloakroom completes the ground floor.

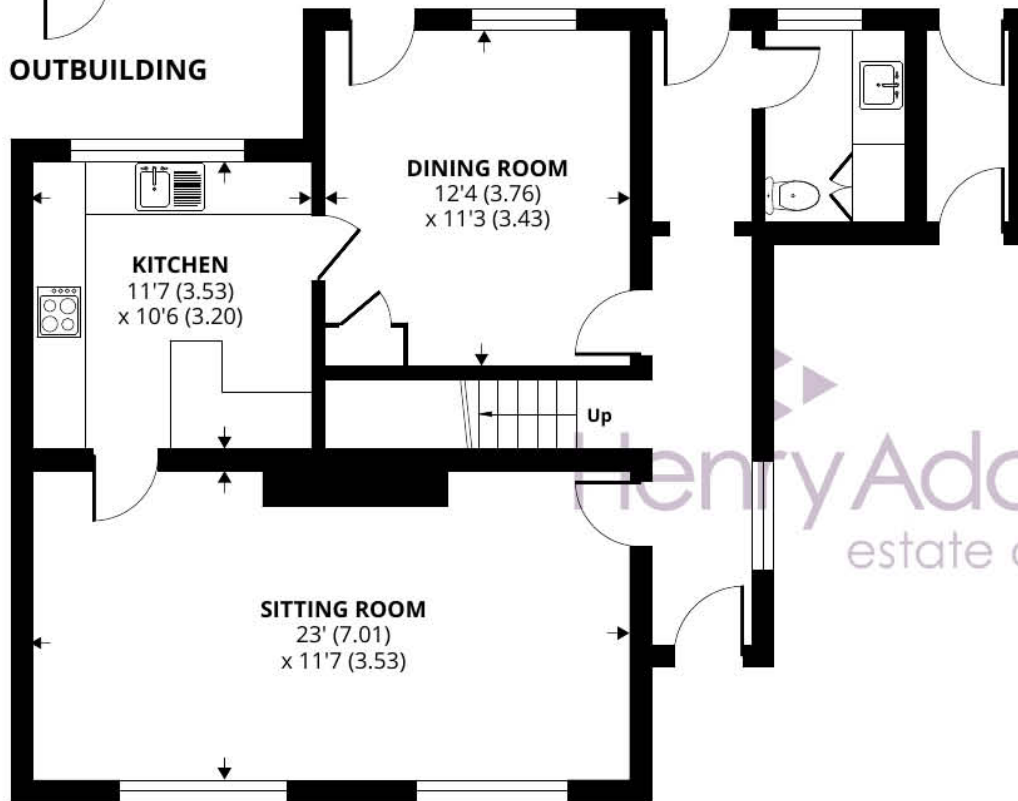
Ascending to the first floor, you will find three generously sized double bedrooms, each with ample space for furnishings and personal touches. The bathroom suite is well-appointed with both a stand-alone shower and a bath, ensuring a relaxing and practical space.

Externally, the property shines with its unique feature—a south-facing walled garden that ensures complete privacy. This serene outdoor space is adorned with mature shrubs and flowers, creating a picturesque retreat for relaxation and entertaining.

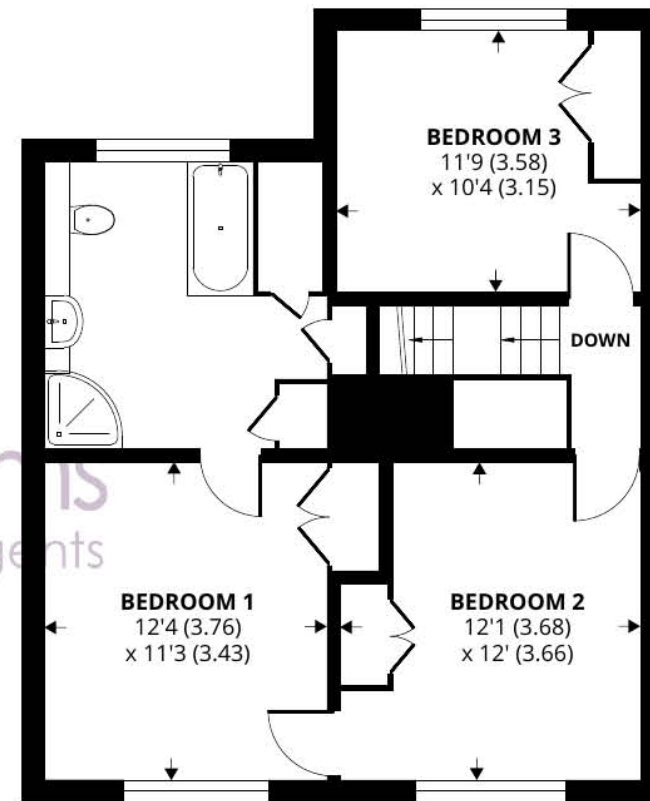




OUTBUILDING



GROUND FLOOR



FIRST FLOOR

8 Bepton Road, Midhurst, GU29 9LU

Approximate Area = 1350 sq ft / 125.4 sq m

Outbuilding = 40 sq ft / 3.7 sq m

Total = 1390 sq ft / 129.1 sq m

For identification only - Not to scale



Floor plan produced in accordance with RICS Property Measurement Standards incorporating International Property Measurement Standards (IPMS2 Residential). © nichecom 2024. Produced for Henry Adams. REF: 1155267

Agents Note - Our particulars are for guidance only and are intended to give a fair overall summary of the property. They do not form part of any contract or offer, and should not be relied upon as a statement or representation of fact. Measurements, areas and distances are approximate only. Photographs may include lifestyle shots and pictures of local views. No undertaking is given as to the structural condition of the property, or any necessary consents or the operating ability or efficiency of any service, system or appliance. Please ask if you would like further information, especially before you travel to the property.

Location and Amenities

The thriving town of Midhurst resides on the Surrey and Sussex border. Full of listed buildings, attractive shops and narrow lanes, it's also blessed with charming hotels and restaurants. There are also primary schools, an Academy College, leisure complex, medical centre, a library, Sainsburys and the Cowdray Park golf course. The town has previously been declared as one of the best places to live in the South East by a Sunday Times survey which was based on a number of criteria including lifestyle, crime rate, schooling and house prices.

Discover more extensive havens of choice in nearby Haslemere and Chichester, while neighbouring Petworth has a variety of shops and National Trust parkland. There are plenty of leisure pursuits from walking, cycling and horse riding in the National Park, to shooting and fishing in the historic Cowdray Park. Sailors and theatre-goers will love Chichester and for racing enthusiasts, glorious Goodwood is within a short drive too.

For more information on the town log on to the visitmidhurst.com website.

